



# Colonial Williamsburg News

INFORMATION ABOUT COLONIAL WILLIAMSBURG PEOPLE AND PROGRAMS VOLUME 53, NO. 2 JANUARY 11, 2000

## Golden Horseshoe, Inn receive national awards

Colonial Williamsburg's Golden Horseshoe Golf Club and the world-class Williamsburg Inn recently received several prestigious awards.

The National Association of Golf Tournament Directors (NAGTD) has recognized the Golden Horseshoe Golf Club as one of North America's 10 best courses for tournament service and hospitality. A panel of directors for business and fund-raising golf tournaments selected the Golden Horseshoe for NAGTD's coveted APEX Award.

NAGTD represents 500 tournament directors and the 6,000 business, charity and recreational tournaments they stage.

The Golden Horseshoe, which consistently has been recognized by GOLF magazine as among the "best of the best," is the only golf club in Virginia to receive the

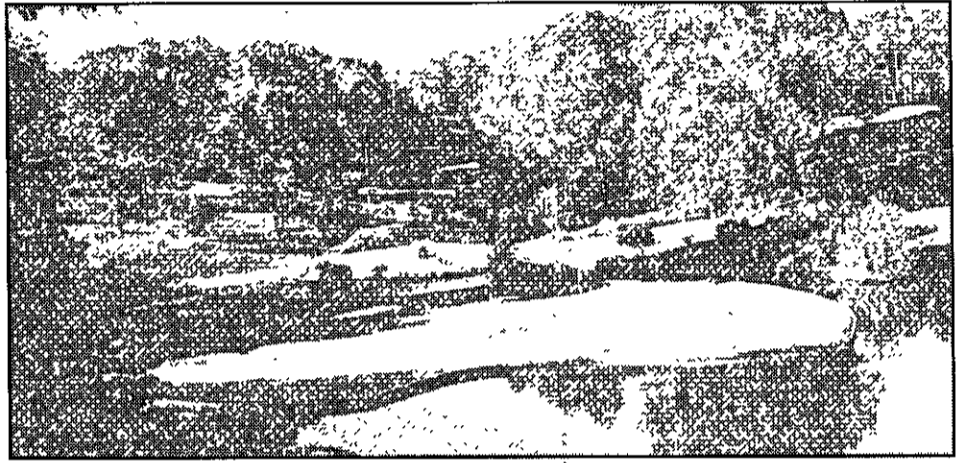
APEX Award. "Obviously, it's an honor to be in the company of these other prestigious golf clubs," said Peter J. Bonell, Colonial Williamsburg Company vice president for sales and marketing.

"Voting was extremely close for the 10 top spots," said NAGTD's Executive Director Amanda Flangas. "The APEX Award is quite an honor, as these courses were judged on service as well as physical facilities."

The Golden Horseshoe's Green, Gold and Executive Spotswood courses also have received the Gold Tee Award for overall excellence from "Meetings & Conventions" magazine, which is read by 76,000 corporate, incentive and association meeting planners. "Meetings & Conventions" is a division of Cahner's Travel Group.

In addition, readers of "Meetings & Conventions" awarded the Golden Horseshoe the

*See Awards, page 3*



Colonial Williamsburg photo

The Golden Horseshoe, which consistently has been recognized by GOLF magazine as among the "best of the best," is the only golf club in Virginia to receive the APEX Award. Featured above is the signature 16th hole at the Golden Horseshoe Gold Course.

## Wallace Museum to display the ABCs of ceramics

Visitors to Colonial Williamsburg's DeWitt Wallace Decorative Arts Museum soon will be able to master the basic skills necessary to understand and recognize the major categories of ceramics used in late 17th- to early 19th-century America and England. "Identifying Ceramics: The Who, What and Ware," which opens Feb. 5 and runs through Sept. 3, 2001, will focus on features that distinguish one type of ceramic material from another.

Designed to appeal to the general public as well as the novice collector, this exhibition will display an assortment of 80 ceramic objects and shards. Basic fabrication and decoration techniques will be illustrated by three major categories of ceramics: earthenware, stoneware and porcelain.

Each category of ceramics will have its own display area. The section on earthenware will include coarse, slipware, delft, tortoiseshell, green-glazed, creamware and pearlware objects. Stoneware will be represented by examples of utilitarian, white, scratch blue, multicolored and red wares. Finally, the porcelains will include Chinese hard paste, English soft paste and bone china.

"The exhibit helps to fill a void," noted Janine Skerry, curator of glass and ceramics for Colonial Williamsburg and curator of the exhibit. "There is such a lack of basic information in print about identifying ceramics. It's hard to research great-grandmother's teapot or your tag sale treasures unless you can distinguish between earthenware and porcelain."

A number of objects will be conserved in Colonial Williamsburg's state-of-the-art object conservation laboratory prior to their display. "This project gives us the opportunity not only to examine the original ceramics but also to deal with historical repairs — and these are abundant with information in and of themselves," said Scott Nolley, Colonial Williamsburg's conservator of objects.

Related programming will include "More Than Just a Pretty Vase: Ceramics in the Colonial Home," a conference of lectures and workshops offered by the Williamsburg Institute in conjunction with Sotheby's March 23-25. Designed for new collectors and confirmed "china maniacs," participants will learn how to identify and



Colonial Williamsburg photo

"Identifying Ceramics: The Who, What and Ware" will feature a variety of ceramics, including figure of a seated man with a monkey of hard paste porcelain.

appreciate British and Chinese ceramics used in colonial America as well as how to care for a collection. Special features include hands-on workshops and a "show and tell" session where participants can share their own ceramic heirlooms for identification and analysis by noted pottery and porcelain specialists and instructors. For further information on how to register, please call the Williamsburg Institute at 7182, fax 565-8630 or e-mail [tengle@cwf.org](mailto:tengle@cwf.org).



## Development employee guesses TIME's "Person of the Century"

Congratulations to Shawn Holl of development for being the first person to correctly guess TIME magazine's "Person of the Century." She will receive a free dinner for two (excluding alcoholic beverages) at the Williamsburg Lodge compliments of the marketing communications division.

"[Albert Einstein] was the pre-eminent scientist in a century dominated by science. The touchstones of the era — the Bomb, the Big Bang, quantum physics and electronics — all bear his imprint," said TIME.

Einstein (1879-1955) was a German physicist who is best known for his theory of relativity.

Runners-up in the "Person of the Century" contest were Franklin D. Roosevelt and Mohandas Gandhi.

Nine additional employees cast their votes for "Person of the Century." The most popular guess was Adolf Hitler followed by Franklin D. Roosevelt. Other candidates were Nelson Mandela, Henry Ford, Mother Teresa, The Beatles, Walt Disney, Wilbur and Orville Wright and the American GI.

Candidates were listed in five categories: Leaders & Revolutionaries; Artists & Entertainers; Builders & Titans; Scientists & Thinkers; and Heroes & Icons.

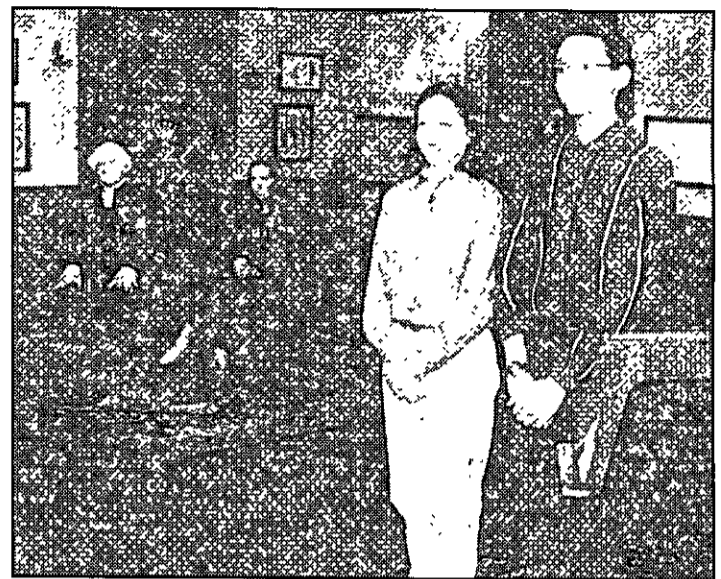
## EFT explores "A Day in the Life" of colonial residents

Students across the country have a rare opportunity this week to experience colonial history, not through the eyes of a "famous forefather" — Thomas Jefferson, Patrick Henry or George Washington — but through the eyes and ears of young people much like their modern audience.

"A Day in the Life," Colonial Williamsburg's Electronic Field Trip for January (the fourth in the current school year series of seven programs), invites students to walk in the footsteps of an 18th-century apprentice, a well-to-do young lady and a young slave to discover their world.

Anyone interested in seeing the Electronic Field Trip is invited to watch either of two presentations — 10 a.m. or 1 p.m. Thursday, Jan. 13 — in the Lane Auditorium at Bruton Heights School Education Center. The program, a state-of-the-art educational experience in early American history, will be transmitted live to more than one million students in classrooms across the nation.

The award-winning program series employs the latest interactive technologies to excite students about the origins of our national ideals and values. Now in their third year, Electronic Field Trips have helped Colonial Williamsburg dramatically expand the museum's educational outreach to touch children throughout the country and support



Photos by Jim Bradley

A collaborative effort between Colonial Williamsburg and Mount Vernon produced last month's Electronic Field Trip on Dec. 2.

"Washington: Man and Myth" offered students the opportunity to learn about the "father of our country" from George Washington himself, as portrayed by Mount Vernon character interpreter Bill Summerfield (left in the background in each photo). Mount Vernon historian Nancy Heyward (second from left in the background of each photo) provided a modern historical perspective. For the first time, the one-hour program boasted four co-hosts. (Photo left, foreground) Annabelle Ombac and Peter Mains, handled the first half of the program and (photo right, foreground) Ruth Laben and Jonah Lampkin co-hosted the second half of the program.

Colonial Williamsburg's educational mission. Electronic Field Trips bring dramatic stories to schools in a way that makes our nation's history exciting and relevant today.

The hour-long programs are transmitted via satellite monthly — October through April — during the school year.

Schools receive the broadcast through local PBS stations, educational access channels, cable systems and direct satellite downlink.

Students in registered schools interact directly with Colonial Williamsburg historians and interpreters through telephone connections, Internet bulletin boards and e-

mail. Registered schools also receive access to dedicated Internet websites for each program that are active throughout the school year. Teachers in registered schools receive advance lesson plans and support materials from Colonial Williamsburg to maximize learning experiences for their students.

## Spring catalog reflects changes in products line

Several changes to the Spring 2000 WILLIAMSBURG® Catalog made it a landmark edition as it arrived in nearly 680,000 homes during the first week of January. The first book to contain licensed WILLIAMSBURG Pure. Simple. Today products, it also includes a new WILLIAMSBURG® clothing line, complete with 18th-century-inspired oversized shirts and shifts.

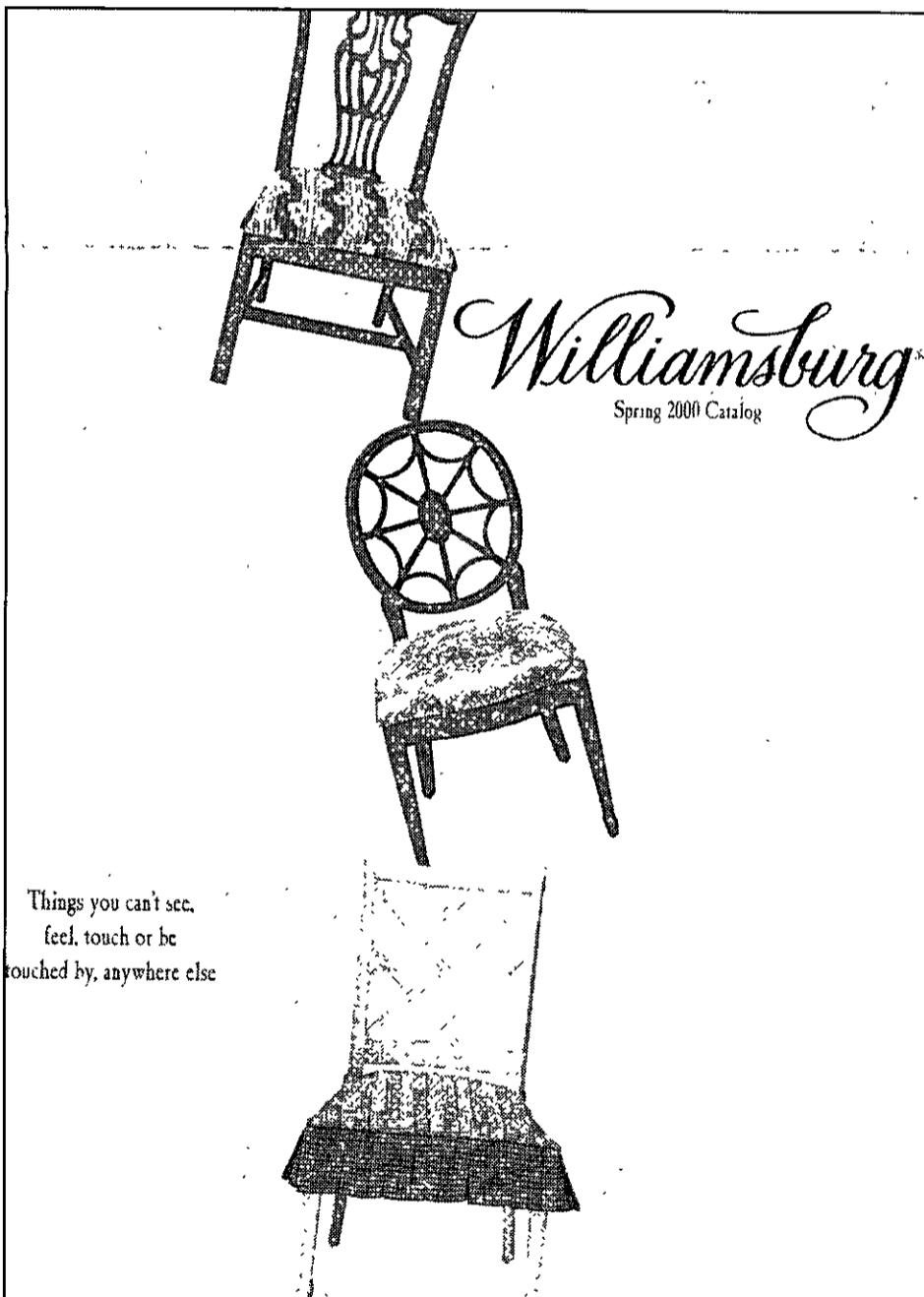
"As we move forward with the growth and expansion of the catalog, we are always looking for promising new and enhanced categories of merchandise," said Tammy Kersey, director of catalog. "While we've held on to the class and quality that make WILLIAMSBURG® so special, we've slowly combined the timeless with the timely. The result has been very successful."

The new catalog opens to an explanation of WILLIAMSBURG Pure. Simple. Today, as an interpretive parallel to the classic reproduction line. Offerings by Lane include the distinctive Star Tall Chest, the overstuffed and very comfortable Millington Sofa and Chair, the exotic pole rattan China Passage Bed and the traditional and convenient Lafayette Cedar Chest. Other new licensed items include fabrics and bedding by Waverly, lamps by The Natural Light, new quilt patterns and ceramics by C & F Enterprises and rugs by Nourisan.

There are many new items that do not fall under the Pure. Simple. Today label including the Rose Mirror by Carver's Guild and Byers' Choice figurines dressed for spring temperatures.

WILLIAMSBURG® clothing was inspired by articles worn in the 18th century, with period details such as split back yokes and underarm gussets. The new collection includes a work vest; short and long shifts; men's and women's shirts, a work apron; and a woven seagrass hat for gardening.

"An apparel line," says Kersey, "is typically a high growth category in terms of sales — and one that we were missing. We are eagerly awaiting sales results for the new WILLIAMSBURG® line."



The Spring 2000 catalog reflects the major changes to the WILLIAMSBURG® Products Program. The first book to contain licensed WILLIAMSBURG Pure. Simple. Today products, it also includes a new WILLIAMSBURG® clothing line, complete with 18th-century-inspired oversized shirts and shifts. The catalog was mailed in January to 680,000 homes.

## For employees only: Intranet offers catalog savings

Employees can now order first-quality discounted merchandise from the Williamsburg Catalog through the intranet, accessed by typing "intranet.cwf.org" in the address bar of Internet Explorer.

"We wanted to make it easy for all em-

ployees to take advantage of special savings on selected merchandise, ask for catalogs for yourself or other friends, place gift orders or just keep an eye on what's happening down the road at our new facility," said Tammy Kersey, catalog director. "Sale items

will change frequently, so it's best to check in to the site often."

An order form is available at the site that can be faxed to the catalog department and packages will be shipped to home or business locations.

## Security, safety employee earns hospitality award

Colonial Williamsburg employee Jim Perdue has been awarded the Order of the Pineapple, the highest award an employee can receive for courtesy and hospitality.

Perdue, a lieutenant in the security and safety department, has been with the foundation since May 1987.

People who nominated him for the Order of the Pineapple had this to say:

"Jim Perdue sets the example in security and safety for hospitality and courtesy. Most people who come into the office for help are the beneficiaries of Jim's unfailing good humor and helpful attitude. Many times those who come into the office are upset because they received a parking ticket or because they have lost something valuable to them. Other times they are looking for someone to issue them a decal or just provide information. In every case, Jim makes the person feel like he or she is being treated as an individual whose problem is important."

"No matter how busy Jim is or how many times he has answered a question, he treats every interaction with another employee or a visitor as if it were the first that day. He is one of the many behind-the-scenes employees at Colonial Williamsburg who make the place special for visitors and other employees without calling attention to themselves. Jim richly deserves this recognition."

A visitor who nominated him for the award said, "Jim Perdue was one of the security officers on the job when I passed out at the Governor's Palace. The officers' kindness, caring and helpfulness could not have been improved. It certainly makes me feel more secure knowing there are people like them on the job."

Criteria for the award include:

- Exceeding guests' and employees' expectations;
- Serving as a role model by consistently exhibiting hospitality and courtesy toward guests and employees;
- Enhancing the dignity and self-esteem of employees and guests; and
- Promoting hospitality and courtesy within his/her own department and between departments and divisions.

To nominate someone for the award, complete a nomination form found on bulletin boards throughout the foundation and return it to Shawn Holl at the Goodwin Building. For more information, contact Holl at 7229.

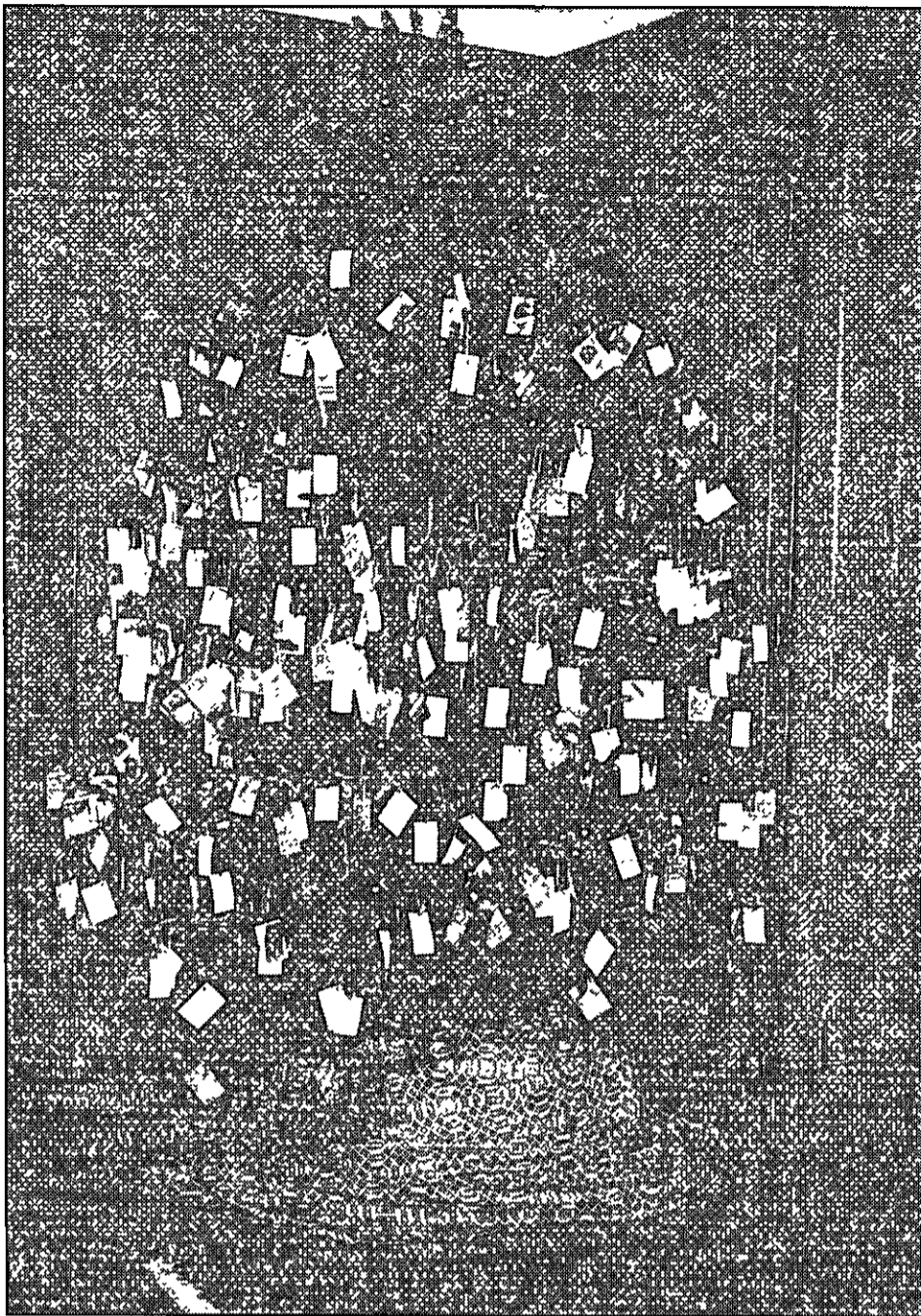


Photo by Will Molineux

The tagged Christmas tree is a tradition at the Williamsburg Lodge. Guests left messages of holiday greetings on this year's tree on tags.

## Tagged Christmas trees a tradition at the Lodge

The holiday tradition of guests tagging a Christmas tree at the Williamsburg Lodge continued this year.

Guests signed their names and hometowns to tags that were hung on the tree in the lobby near the entranceway. Many added personal messages, such as those from the Clark family of Dumfries, Va.: "Having a marvelous time!" Hundreds of tags hung on the branches for passersby to read. Many offered greetings and best wishes for the new year. A few simply say,

"Have a Happy Millennium."

Guests from far and near tagged the tree. There were tags by visitors from Rochester, N.Y., and Mayville, Tenn., and Atlanta and New Wales, Pa. There also are tags from residents of Falls Church, Chesapeake and Poquoson — and even Williamsburg.

Perhaps the tag appreciated most by the staff at the Lodge is from Nancy, who did not note her hometown. Her tag reads, "Nancy loves Williamsburg because you are so good."

## Christmas decoration demonstration



Photo by Jim Bradley

Martha Marquardt explains Christmas decoration construction techniques to two visitors at the workshop open to the public Dec. 1-24 at the Robert Carter House. Thousands of visitors strolled through the house, observing landscape staff assembling decorations as they answered visitor questions. Other rooms in the house offered Christmas decorations and accessories for sale.

## Awards

Continued from page 1

Conventions" awarded the Williamsburg Inn its Gold Key Award for 1999. The award is based on seven criteria: overall attitude of meeting staff; quality of meeting rooms; availability and quality of guest services; quality of food and beverage service; proficiency and ease of handling reservations; availability of A/V and other techni-

cal support equipment, and widest possible range of recreational facilities.

Also, for the fourth year in a row readers of "Travel & Leisure" magazine have rated the Williamsburg Inn among the best 100 hotels in the world. The Inn ranks 11th among hotels in the continental United States.

## Community Christmas Tree lighting



Photo by Will Molineux

Dana Hogge of the electrical department hands Tony Craig in the landscape department's aerial bucket a string of lights for the Community Christmas Tree in Market Square as Gary Ward, right, looks on. Craig and his partner, Scott Jones, who climbed the trunk of the tree and is not shown in this photograph, placed more than 900 lights on the 50-foot-tall tree near the Greenhow Brick Office. The tree lights were turned on Christmas Eve.

### In the mailbox ...

Dear Colonial Williamsburg

I had a wonderful time [during my recent visit to Williamsburg]. I was especially glad to visit Carter's Grove again. It is one of my favorite places. There I met Robert Watson. I enjoyed my conversation with him very much. As I told him, the Slave Quarter and Wolstenholme Towne are very moving sites to visit.

I also would like to mention the hospitality shown to me by [the waiter] who served me twice at Christana Campbell's, and Charles Bratton, who took care of me at breakfast in the Regency Room.

Everything about Colonial Williamsburg is special. I am looking forward to future visits.

Sincerely,  
Carol Ann Spagnola  
Camden, N.J.

Dear Colonial Williamsburg

Recently, I went to Colonial Williamsburg on a vacation. It was quite lovely and wonderful to see how the staff really gets into their jobs. I would just like to say that you really impressed me, so much so that I went again two years later. Thank you. And by the way, your calendars and cards that you sent me after the visits were beautifully photographed and I do use them.

Kerri Lynn,  
Albuquerque, N.M.

# JAN. 13 - JAN. 19

## HAPPENINGS AT COLONIAL WILLIAMSBURG

### THURSDAY, JANUARY 13

CWC payday.

**"A Day in the Life"** - Colonial Williamsburg's Electronic Field Trip for January is presented live at the Bruton Heights School Education Center Lane Auditorium at 10 a.m. or 1 p.m. The program details colonial life for three youngsters: an apprentice, a well-to-do young woman and a slave.

### FRIDAY, JANUARY 14

**Legends: Ghosts, Mysteries and Myth**, 7 and 8:30 p.m.

**Williamsburg's Most Wanted**, 7:30 p.m., Capitol.

### SATURDAY, JANUARY 15

**Cry Witch**, 7:30 and 9 p.m., Capitol.

**Legends: Ghosts, Mysteries and Myth**, 7 and 8:30 p.m.

### SUNDAY, JANUARY 16

**Spellbound**, 7 p.m., Courthouse.

**Lantern Tour**, 7 and 8:30 p.m.

### MONDAY, JANUARY 17

### TUESDAY, JANUARY 18

### WEDNESDAY, JANUARY 19

Spending accounts bi-weekly deadline today. Claims for reimbursement from medical and dependent care spending accounts for CWC employees must be submitted by noon to the compensation and benefits office in the Franklin Street Office Building. Next deadline for CWF employees is Jan. 26.

**Benefits Workshop**, 3 p.m., Franklin Street Office, Room 147. Answers to benefit questions and assistance with enrollment paperwork.

**Meet the Curator Tour with Amy Muraca**, assistant curator of museum education and exhibits, 2:30 p.m., AARFAM. Explore the holiday exhibit "Antique Toys and Playthings."

### IN THE MUSEUMS ...

**At the Abby Aldrich Rockefeller Folk Art Museum:**

**"Holiday Magic: Antique Toys and Playthings"** - Visitors to the exhibit will discover toys that amused children 100 years ago, including some well-known favorites that remain popular today. Complementing the display of toys from the permanent collection will be **"A Tasha Tudor Christmas,"** an exhibit displaying items from the personal collection of renowned children's book illustrator and author, Tasha Tudor.

**"An Introduction to American Folk Art and Folk Art in American Life"** - The Center's permanent collection of paintings, sculpture, textiles, furniture and a variety of three-dimensional objects such as whittlings, weather vanes and shop signs.

**"Meet the Makers"** - Biographies of six distinctive artists and examples of their works.

**"Selections from Mrs. Rockefeller's Collection"** - Major examples of folk art collected by Abby Aldrich Rockefeller in the 1930s.

**At the DeWitt Wallace Decorative Arts Museum:**

**"Revealing Fashions"** - Discover how people lived and worked, the evolution of textile production and how 18th-century clothing styles have influenced 20th-century fashion.

**"1699: When Virginia Was the Wild West!"** - Some of the rarest 17th-century decorative arts objects from what was then the western frontier, plus more than 300 artifacts excavated from early African, English and Native American settlements on both sides of the Chesapeake Bay.

**"Am I Not a Man and a Brother: Abolition and Anti-Slavery in the Early Chesapeake"** - An exploration of the anti-slavery sentiment in England and eastern Virginia before 1830.

**"Treasure Quest: Great Silver Collections from Colonial Williamsburg"** - Hundreds of objects, including early English silver plate, donated to Colonial Williamsburg by major silver collectors.

**"Furniture of the American South"** - More than 150 of Colonial Williamsburg's finest examples of early Southern furniture.

**"Revolution in Taste"** - Consumer choices in ceramics and metals during the 18th century.

**"Artistry and Ingenuity"** - A look at colonial kitchen equipment from an aesthetic and practical viewpoint.

**"Lock, Stock, and Barrel: Early Firearms from the Colonial Williamsburg Collection"** - An outstanding display of military and civilian firearms.

**"Medicine in 18th-century Williamsburg"** - Medical instruments owned by the Galt family in 18th and early 19th-century Williamsburg.

Send your calendar items via interoffice mail to CW News - GBO 132, or fax them to 7702. Please send items by noon Monday, two weeks in advance. Call 7121 for information.

## NewsBriefs

### Christmas Basket program helps needy families

The 1999 Christmas Basket program assisted several families in the area with food and gifts. A total of 56 departments in the Colonial Williamsburg Foundation participated in the program. Colonial Williamsburg Company sponsored 22 of its own employees on disability. Foundation and hotel property employees were able to help 76 families, including:

- 21 retirees;
- 28 current employees;
- 14 families from Avalon;
- nine families from the Williamsburg AIDS Network; and
- four large families from the Community Action Agency.

Tia Munzel Adams of merchandise management, with assistance from Marie Caulford in products, coordinated the program for the Hospitality and Courtesy Committee. The Hospitality and Courtesy Committee thanks all employees for participating in this annual program.

### Casting call is issued for TV commercial filming

All Colonial Williamsburg employees, retirees, volunteers and families are invited to a casting call to audition for parts in this

year's Colonial Williamsburg TV commercial filming. The casting call will take place noon to 7 p.m. at the Cascades Corner Room on Wednesday, Jan. 12 and Thursday, Jan. 13. The filming of the commercial will take place Feb. 2-4. Auditions will be for speaking and non-speaking parts for principals and extras. To schedule an appointment, call Carol Brinkley at 7598. Walk-in also are welcome.

### Dependent passes now available from security

The procedure for obtaining dependent passes has changed. Employees or dependents may go to the human resources reception desk located in the Franklin Street Office Building 8:30 a.m. to 5 p.m. Monday through Friday. Employees may pick up the passes needed for their dependents if it is more convenient than having the dependent pick up the pass. Dependents need to go to the Visitor Center with the pass to have their picture taken and the pass validated. For more information, contact security and safety at 7376.

### In memory...

**Jeremiah Harper**, retiree, died Dec. 16. He began working for the foundation in 1951 as a dishwasher at the Williamsburg Lodge and retired after 34 years of service. He is survived by his wife, two brothers and one sister.

### Winners Circle

Congratulations to the employees who correctly guessed the Oct. 19 Picture Gallery, which was the Saunders Plantation sign on the Gold Course: **Greg Otto, George Mackert and Richard Earls.**

Congratulations to the employees who correctly guessed the Oct. 26 Picture Gallery, which was the exhibit at the John D. Rockefeller Jr. Library: **Mary Ann Burke and Terry Yemm.**

Congratulations to the employees who correctly guessed the Nov. 9 Picture Gallery, which were the scare bunnies at the Benjamin Powell House: **Joan Oaks, Katherine Warden and Pam Miles.**

Congratulations to the employees who correctly guessed the Nov. 16 Picture Gallery, which was a hat at the Mary Dickinson Shop: **Rod Faulkner, Lisa Reid and Marie Caulford.**

The Nov. 23 Picture Gallery was a sugar cone.

Congratulations to the employees who correctly guessed the Dec. 7 Picture Gallery, which was the Christmas tree at the Governor's Inn: **Beverly Edwards, Alex Parlett, Walt Troy, Toni Washington, Susan Mullins and Tommy Taylor.**

### Picture Gallery

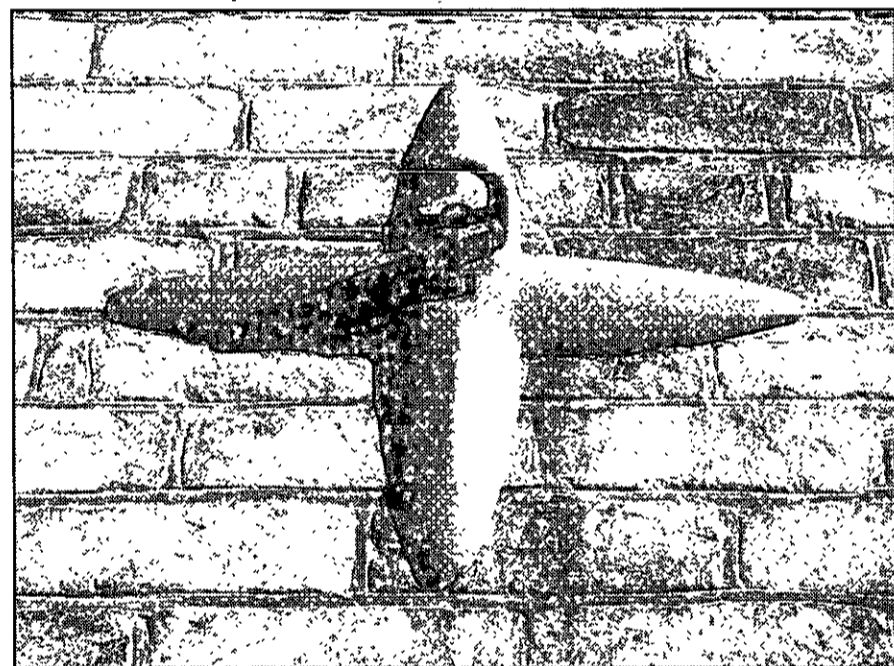


Photo by Will Molineux

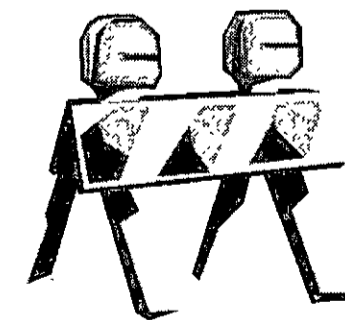
Where can you find this? Call Penna Rogers at 7121 with your guess. Please leave your name and extension where you can be reached.

### Under Construction

#### This week in the Visitor Center/Hotels Renovation project

■ The Green Parking Lot at the Visitor Center is closed to visitors. Employee parking is available in the Green Lot until construction of the new Woodlands Hotel begins in May.

■ Expansion of the central utility plant at the Williamsburg Lodge is scheduled with construction to begin by late January.



Colonial Williamsburg News is published weekly by the Public Relations Department for Colonial Williamsburg employees. Send correspondence to Colonial Williamsburg News, GBO-132 or fax it to 220-7702.

Director of Public Relations

Timothy W. Andrews, 7265

Editor

Penna Rogers, 7121

Contributors: Amy Armstrong, Jim Bradley, Lorraine Brooks, Dave Doody, Kathy Dunn, Carol Carcy Godwin, Tom Green, Sophia Hart, Kate Lanier, Kelly Mihalec, Will Molineux, James M. Tishko, Lael White

This publication is printed on recycled paper.

©2000 by Colonial Williamsburg Foundation