

Anthony Hay House (NB) Archaeological Report
Vol. III Part I, Block 28 Building 71 Lot 263-264

*Originally entitled: "The Anthony Hay Site Block 28,
Area D, Colonial Lots 263 and 264 Volume III Part I"*

I. Noël Hume

1961

Colonial Williamsburg Foundation Library Research Report Series - 1554
Colonial Williamsburg Foundation Library

Williamsburg, Virginia

1990

THE ANTHONY HAY SITE

Block 28, Area D

Colonial Lots 263 and 264

REPORT ON ARCHAEOLOGICAL EXCAVATIONS OF 1959-1960

THE ARTIFACTS

Volume III

Part I

October 1961

Prepared by I. Noël Hume

TABLE OF CONTENTS

Part 1

- Table of figures
- Bibliographic abbreviations
- Introduction
- Figures 1 to 35

Part 2

- Figures 36 to 64
- Dating of Excavation Register Groups
- List of photograph negative numbers

TABLE OF FIGURES

Figure 1 .	Cabinet hardware
2	Cabinet hardware
3	Cabinet hardware
4	Cabinet hardware
5	Cabinet hardware
6	Plane irons
7	Files, rasps, punches
8	Chisels and other tools
9	Wooden objects
10	Military items

11	Gun locks
12	Buttons
13	Buckles
14	Buckles
15	Beads, "gems", sleeve buttons and knee buckle
16	Coins, thimbles, curtain rings, watch parts and other small finds
17	Cutlery
18	Spoons, scissors, clasp knives and corkscrews
19	Delftware
19a	Delftware
20	Delftware
21	Dipped and white saltglaze
22	White saltglaze
23	White saltglaze
24	Plain and enamelled white saltglaze
25	White saltglaze
26	Whieldon-Wedgwood wares
27	Plain and painted creamware
28	Creamware
29	Chinese export and English porcelain
30	English porcelain
31	Inscribed base of brown stoneware vessel, 1740
32	Yorktown and Nottingham stonewares
33	German and English brown stoneware bottles
34	German stonewares
35	Chamberpots and closetool pan
36	West of England earthenware bowl
37	Slipwares
38	Slipwares
39	Slipwares and other earthenwares
40	Colono-Indian pottery and lithic point
41	Opaque white glass tankard
42	Wine glasses and mallet decanter base
43	Wine glass stems and other fragments
44	Wine glass stems
45	Tumbler bases, handles and other fragments
46	Pharmaceutical bottles and other fragments
47	Stoppers and other glass fragments
48	Wine bottle seals
49	Wine and other glass bottles
50	Bottle and jar fragments
51	Bottles, various
52	Mirror plate, crown and other glass fragments
53	Objects of lead and brass
54	Small finds, various
55	Copper and brass kettle parts and spigot

55a	Orthopaedic corset
56	Iron locks and other items from the Hay residence
57	Builders' hardware
58	Builders' hardware
59	Domestic hardware
60	Cannon balls and other iron objects
61	Brass horse furniture
62	Iron horse furniture
63	Iron horse furniture
64	Agricultural items

Bibliographic Abbreviations

Burnap The Frank P. and Harriet C. Burnap Collection of English Pottery , Nelson-Atkins Gallery of Art, Kansas City, 1953.

Calver & Bolton William Louis Calver and Reginald Pelham Bolton, *History Written With Pick and Shovel* , New York Historical Society, 1950.

English Ceramic Circle Catalogue English Pottery and Porcelain , Catalogue of an English Ceramic Circle Exhibition at the Victoria and Albert Museum, London, 1948.

Garner F. H. Garner, *English Delftware* , London, 1950.

Haynes E. Barrington Haynes, *Glass Through the Ages* , Middlesex, 1948.

Hughes G. Bernard Hughes, *English, Scottish and Irish Table Glass* , London, 1956.

Jewitt Llewellyn Jewitt, *The Ceramic Art of Great Britain* , London, 1878.

McKearin George S. and Helen McKearin, *American Glass* , New York, 1959.

Mercer Henry C. Mercer, *Ancient Carpenters' Tools* , Doylestown, Pennsylvania, 1951.

Michaelis Ronald F. Michaelis, *Antique Pewter of the British Isles* , London, 1955.

Newman Eric P. Newman, *Coinage for Colonial Virginia* , American Numismatic Society, New York, 1956.

Nutting Wallace Nutting, *Furniture Treasury* , New York, 1954.

Peterson Harold L. Peterson, *Arms and Armor in Colonial America* , Harrisburg, Pennsylvania, 1956.

Towner Donald C. Towner, *English Cream-coloured Earthenware* , London.

Tutter's Neck I. Noël Hume, *Excavations at Tutter's Neck, James City County in Virginia, 1960-1961* , Smithsonian Ms. Report, 1961.

Introduction

The following captioned photographs represent a selection of the artifacts from the 1959-1960 Anthony Hay site excavations and are intended to illustrate examples in all the basic categories.

Size is indicated either by a graphic scale or by the use of a one-inch squared background.

Excavation Register (E.R.) numbers at the end of each caption indicate the different strata and deposits from which the pieces were obtained. A table of dating for these numbers will be found at the rear of the figures.

This volume is not a complete record of all the artifacts from the site, nor does the caption material claim to include all that can or should be said of each item. It is hoped that when time permits, a full and careful study of the entire artifact collection will be undertaken and a complete report made.

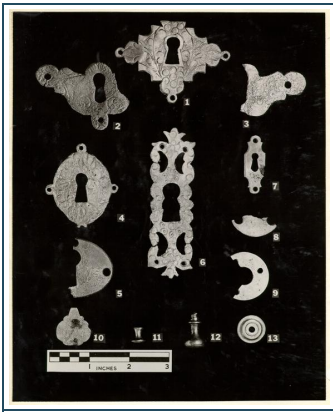


Figure 1

Figure 1

- 1 Keyhole escutcheon, brass, beveled edges, stamped foliate ornament; a form frequently associated with cupboards of the period c.1690-1710. (*Nutting*, 470 471). E.R.231C.
- 2 Keyhole escutcheon, brass, beveled edges, stamped ornament. A Queen Anne form. (*Nutting*, 3690). E.R.195.
- 3 As above, fragmentary. E.R.230D.
- 4 Keyhole escutcheon, oval, brass, stamped foliate ornament. Queen Anne form. (*Country Life*, March 10, 1960, recent sale-room items. Fig. 2). A type usually associated with cupboards and bookcases. E.R.205.
- 5 Keyhole escutcheon, brass, oval, beveled edges, incomplete. E.R.243.
- 6 Keyhole escutcheon, brass, cutout ornament, stamped decoration; bookcase or tall case clock form, first quarter of 18th century. E.R.230E.
- 7 Keyhole escutcheon, brass, beveled edges, probably from clock or bookcase. E.R.337.
- 8 Washer fragment, brass, possibly from door knob. E.R.222A.
- 9 Washer fragment, brass, probably from door knob. (See Fig. 5, No. 19). E.R.258.
- 10 Book clasp, brass, stamped tulip decoration, attached to cover by two small iron nails. E.R.191.
- 11 Pull, brass, with hole in shank for nail; probably from secretary drawer. (*Nutting*, 687, 3697-3725). E.R.256A.
- 12 Pull, brass, screw terminal broken; probably from secretary slider. (*Nutting*, 687, 3697-3725).
- 13 Disc, brass, ornamented with raised concentric rings; perhaps washer for a pull, or tear-drop handle (*Nutting*, 3741), E.R.256A.

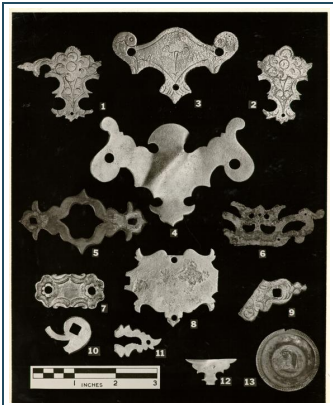


Figure 2

Figure 2

- 1 Handle escutcheon, stamped brass, crude floral ornament of common style. This type of plate was common in the period c.1690-1730. (*Nutting*, 3623, 3735) E.R.247B.
- 2 As No. 1. E.R.247C.
- 3 Handle escutcheon, brass, with stamped and chased ornament; note roughly beveled edges. Probably second quarter of 18th century. E.R.230E.
- 4 Handle escutcheon, brass, typical Chippendale winged form, plain surface, but with beveled edges. (*Nutting*, 3661). E.R.239A.
- 5 Handle escutcheon, brass silver plated, unusual openwork form of the Chippendale period, beveled edges. E.R.294.
- 6 Butterfly hinge, brass, fragment only, openwork in the Chippendale style. A parallel appears *The Antique Dealer's Year Book*, 1956, p.128. E.R.229A.
- 7 Escutcheon, possibly for handle, brass, molded and stamped floral decoration. Unstratified.
- 8 Handle escutcheon, brass, no decoration, but with beveled edges. E.R.224B.

- 9 Handle escutcheon, brass, fragmentary; stamped floral ornament in similar style to Nos. 1 & 2. c.1690-1730. E.R.230C.
- 10 Handle escutcheon, brass, fragment only; Chippendale openwork style, beveled edges. E.R.256A.
- 11 Escutcheon fragment, brass, openwork ornament, beveled edges. Possibly bookcase keyhole escutcheon. (*Nutting*, 688, c.1760-1770). E.R.256A.
- 12 Trimming, brass, perhaps from small escutcheon of Chippendale form, beveled edges. E.R.258.
- 13 Knob face, from chest of drawers, molded brass with repousee horse head in classical style, silver plated and backed with lead. Empire form. E.R.348.

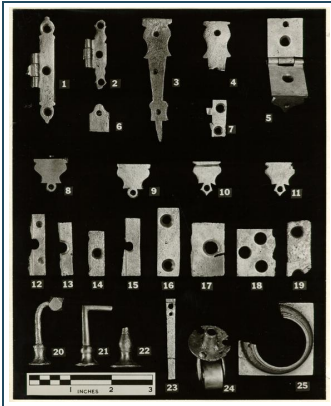


Figure 3

Figure 3

1. H-hinge, brass, beveled edges, iron pin. E.R.229A.
2. H-hinge, brass, beveled edges, iron pin. E.R.231C.
3. Strap hinge, brass, clock hand style. The strap has been cut from the actual hinge and the countersunk holes for screws have never been opened up. This is clearly a waste fragment removed from a hinge that had hitherto never been used. E.R.243M.
4. Strap hinge fragment, similar to the above, but trimmed off flush with the elbow. E.R.214.
5. Hinge, brass, with ornamental terminal, iron pin. Small countersunk holes that have never been opened out are to be seen at the rear of the back plate and on the ornamental terminal. It would appear that hinges of this type were bought in bulk by the cabinetmaker who subsequently cut off the terminals. Examples of the latter trimmings are illustrated by Nos. 8-11. E.R.247F.
6. Trimming, brass, probably from hinge. Note countersunk hole that had not been opened up by use. E.R.237.
7. Hinge fragment, brass, uncertain form. E.R.231C.
8. Terminal, ornamental, brass, beveled edges, trimmed from hinge similar to No. 5. Countersunk hole not pierced; another small hole is drilled above the elbow, a feature absent from the previous example. E.R.239.
9. As above. E.R.263.
10. As above, but form somewhat more angular. An attempt has been made to cut the terminal off below the elbow. However, this was abandoned and a new cut made directly above it. E.R.256A.
11. As No. 10, cut above the elbow. E.R.256A.
- 12-19. Trimmings from hinges, brass; note abortive cuts on Nos. 12 and 15, and partially sunk holes on the former. E.R.257A, 265A, 221, 257A, 213, 256A, 256A and 240.
20. Hook with flaring base and fourteen-sided terminal knob. An iron bolt extended from the base of the brass to a distance of seven-eighths of an inch. E.R.247C.
21. Hook or lever with base similar to the above, but the shaft right-angled at the top and without terminal knob. An iron bolt protruded from the base to a surviving distance of three-quarters of an inch. E.R.258.
22. Hook fragment, perhaps similar to the above, but larger diameter and ornamented with rouletted bands. An iron bolt protruded from the base to a surviving distance of approximately one-half inch. E.R.237A.
23. Bolt, brass, probably from interior of bookcase door. E.R.230E.
24. Castor, brass, made in three parts, probably from a wing chair. See wing chair rear leg fragment with castor in Fig. 9. The three components are as follows:
 - (a) a rosette with three nail holes and a protruding sleeve that is sunk into the base of the leg. An iron bolt passes through the sleeve and is anchored to
 - (b) the head of the U-shaped brass arms that support
 - (c) the wheel. This last is attached to the arms by an iron axle. The wheel is solid brass with a diameter of eleven-sixteenths of an inch, and is concave on both sides around the central hub. Probably third quarter of 18th century. (*Nutting*, 2241, 2304). E.R.239.
25. Pillar base, brass, classical molding, one corner cut away to facilitate mounting against the corner of a clock case. This item almost certainly comes from the base of one of the pillars flanking the face of a tall case clock. Ornament of this kind was in use in England as early as c.1700. (*Nutting*, 3294). Continued into the first years of the 19th century. E.R.230B.

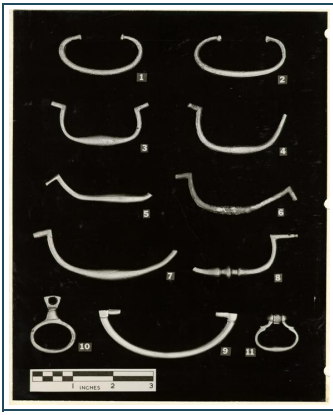


Figure 4

Figure 4

- 1 Handle, brass, oval sectioned, with torque-like terminal knobs. Handles of this type were used almost exclusively with escutcheons of the style shown in Fig. 2, Nos. 1 & 2. c.1690-1730. (*Nutting*, 3735). E.R.192.
- 2 As above, but slightly larger. E.R.198.
- 3 Bail handle, brass, upturned ear terminals, swollen midsection. The form occurs in association with escutcheons and plain rosettes. (*Nutting*, 689, 3734). E.R.257A.
- 4 As above, but with mid-section swelling less pronounced. E.R.228.
- 5 As above, but much bent. E.R.283A.
- 6 As No. 4. E.R.273.
- 7 As No. 3, but somewhat larger. E.R.191.
- 8 Handle, brass, baluster and knop style, long terminals (one missing) with tooled ends. Second quarter of 18th century. (*Nutting*, 1013). E.R.233.
- 9 Handle, brass, oval section, late 18th century form. (*Nutting*, 754, 758). This type is associated with Sheraton and occurs with molded escutcheons of Empire style as well as with plain rosettes. E.R.331.
- 10 Drop handle, brass, the loop oval, the top flattened and backed with a small lug to hold the handle away from the rosette. First half of 18th century. E.R.191.
- 11 Drop handle, brass, delicate design, hollow swivel at top secured with iron pin. (*Nutting*, 3697-3725, bottom row, second from right). E.R.293.



Figure 5

Figure 5

- 1 Post, socketed, brass, square-sectioned shank, for retaining drawer handle, a form generally associated with escutcheons of the styles of Fig. 2, Nos. 3 & 4. E.R.263.
- 2 As above, but longer and with round-sectioned shank. E.R.221.
- 3 Cotter pin, flat brass, used to retain handles of the form illustrated in Fig. 4, Nos. 1 & 2 in association with escutcheons like those in Fig. 2, Nos. 1 & 2. Similar pins were also used to support tear-drop handles, none of which were found in these excavations. E.R.200.
- 4 Cotter pin, thin brass, much lighter than the above, but intended to serve the same purpose. E.R.230C.
- 5 Retaining tongue, brass, probably used to hold mirror or picture in frame. E.R.231C.
- 6 Cover, oval brass, flat back and curved upper surface, one short lug or rivet protruding from the back at one end. Possibly keyhole cover from padlock. (See No. 18) E.R.230C.

- 7 Hinge, brass, from folding rule, brass rivets used throughout. Two plates used at left and three at the right. The central plate (protruding right) was inserted into the thickness of the wood so that a circular disc similar to that at the left, protruded from it. This disc was then sandwiched between the two identical exterior plates extending from the left arm. E.R.263.
- 8 Hinge, brass, right section only, from folding rule, brass rivets. Owner's initial "L" chased on one side. This part of the hinge, with its triple plates, is identical to the right section of No. 7. E.R.221.
- 9 Hasp (?) fragment, brass, reverse side shown with oval lug pierced by circular hole protruding. The front was without decoration, but the edges are beveled. Doubts as to the correct identification of this fragment are raised by the fact that the hole in the lug is circular and so close to the plate as to leave no room for the thickness of the lock plate through which it would have passed. E.R.239.
- 10 Boss or finial, of uncertain purpose, possibly from hood of tall case clock, solid brass roughly cast. Square nine-sixteenths of an inch recess in the back, five-sixteenths in depth, diameter of boss at base one and one-quarter inches. This object has been roughly cut in half with a hacksaw. E.R.256A.?
- 11 Upholstery tacks, shanks and heads brass, the heads convex and ranging in diameter from fifteen-sixteenths to one-quarter of an inch. From various strata, but all colonial contexts.
- 12 Upholstery tack, brass, molded Catherine wheel ornament, brass shank, convex head, diameter nine-sixteenths of an inch. E.R.230C.
- 13 Nails, brass, used for mounting light furniture brasses, e.g. Fig. 2, No. 6. All from colonial contexts.
- 14 Ornamental fragment, molded brass, shell motif; the back roughly tooled to provide sleeve for iron support, The object is too heavy and too coarse to have been used on furniture. Devices with similar mounts, one example bearing the crest of the Randolph family, have been found on other sites and are thought to have been attached to coaches. E.R.221.
- 15 Hinge fragment, brass, probably of butterfly form. E.R.257A.
- 16 Escutcheon of miniature size, brass, with circular lug protruding from the back, perhaps from a pistol. E.R.257A.
- 17 Right-angled bar, brass, rough cut marks on one edge; of uncertain purpose. E.R.247F.
- 18 Padlock, brass, with iron keeper and mechanism, swinging keyhole cover and identical cover pattern molded on the back plate. Probably from small trunk. Found close to the Hay residence, but in association with cabinet hardware. E.R.258.
- 19 Door knob, brass, cast in two pieces, with iron bolt passing through it. A knob of this type would have been associated with a spring catch and would have been backed by a washer similar to that shown in Fig. 1, No. 9. Diameter of knob one and one-quarter inches. E.R.214.
- 20 Ormolu fragment, foliate design. E.R.191.
- 21 Collar fragment, brass, pierced keyhole motif, possibly unfinished. A decorative object of uncertain purpose. E.R.299.
- 22 Guide, brass, possibly a support for coach leathers, depth of aperture three-eighths of an inch. This object was found in association with No. 21. E.R.299.



Figure 6

Figure 6

Plane irons of various sizes, the majority probably from trying planes on the evidence of their flat cutting edges; No. 7 probably from a jack plane. It should be noted that none is slotted or mounted with bolts to form half of a "double iron" of the type commonly used today. (Mercer, p. 118).

Part of an oyster shell is still attached to No. 6, while a small brass ring of uncertain purpose has rusted on to the back of No. 9.

No. 1.	E.R.247C
2.	E.R.209
3.	E.R.228
4.	E.R.209

5.	E.R.231C
6.	E.R.243M
7.	E.R.243G
8.	E.R.231C
9.	E.R.228
10.	E.R.231D

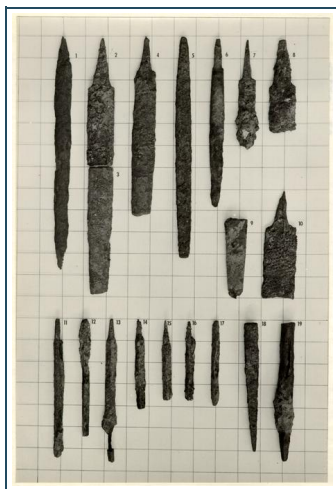


Figure 7

Figure 7

1. Half round, or round-backed file, iron, used for sharpening the curves of molding planes. E.R.217.
- 2-3. Half round file fragments, iron, larger than the above. E.R.243K and E.R.229 respectively.
4. Half round rasp. E.R.230D.
5. Flat file, iron, tapering at both ends, used (according to Mercer, p. 294) "for sharpening pod and side-cutting augers, gouges, pincers, adzes, etc. and tools with gently curving blades." E.R.247B.
6. Half round file, iron, similar to No. 1, but with rectangular tang surviving. E.R.230D.
- 7-8. Upper fragments of half round files, iron. E.R.231D and E.R.233 respectively.
9. Lower shaft section of half round file, iron. E.R.256.
10. Upper shaft and tang fragment of coarse rasp, iron, with punched triangular burrs, used for finishing rounded tool handles, etc. E.R.231B.
- 11-17. Triangular files, iron, used to sharpen saw teeth. Respective Excavation Register numbers as follows: 228, 337A, 230F, 228, 247D, 247D, 221.
18. Square-sectioned spike or punch tapering to a point, with round shank at other end, iron. E.R.191.
19. Round-sectioned punch with square-sectioned taper at pointed end, iron. E.R.209.

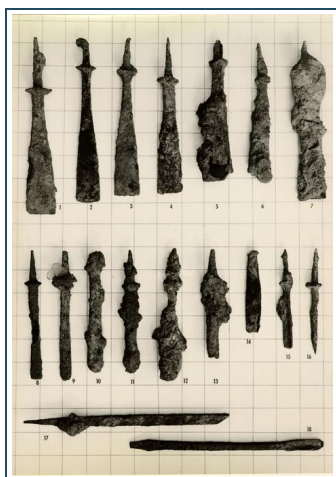


Figure 8

Figure 8

- 1-7. Forming or paring chisels, iron, with octagonal shoulders and square-sectioned tangs. Respective Excavation Register

numbers as follows: 209, 229A, 229A, 247F, 191, 243M, 206.

8-13. Narrow forming or paring chisels, iron, poor condition, but apparently with similar shank and shoulder features to the above.

Excavation Register numbers as follows: 192, 192, 198, 227A, 228, 231D.

14. Small cold chisel, iron, somewhat burred at the top. E.R.256A.

15. Small gouge, iron, octagonal shoulders and sharply tapering square-sectioned tang. E.R.228.

16. Tool of uncertain purpose, iron, square-sectioned tang and shaft, the latter tapering to a point; possibly a leather punch. E.R.229.

17. Morticing chisel, iron, rectangular-sectioned shaft, probably octagonal shoulders and rectangular-sectioned tang. E.R.228.

18. Spoon bit, iron, worm broken from spoon, but cutting edge of first twist surviving, square-sectioned shaft expanding towards bit tongue. E.R.240A.



Figure 9

Figure 9

- 1 Rough hewn table leg, tentatively identified as walnut, straight skirt shaft measuring ten and one-half inches by two and one-half inches by two and three-eighths inches; sufficient wood remaining to create a ball-and-claw foot. Evidence in support of this foot form is provided by the carefully cut V-shaped heel, a feature that is generally rounded on pad or Spanish feet. For additional details see Vol. I, p. 37. E.R.243K.
- 2 Crest rail from chair of Chippendale form, much decayed, greatest surviving thickness one inch; wood not identified. See Vol. I, p. 38. E.R.230F.
- 3 Shaped fragment, perhaps foundation for padded chair arm, tapering at both ends, but most steeply at left. Greatest thickness one and one-fourth inches; wood not identified. E.R.243R.
- 4 Base skirt from chest side (?), thickness five-eighths of an inch, wood not identified. E.R.216.
- 5 Worked fragment of uncertain purpose, ornamental groove close to right edge, greatest thickness three-eighths of an inch, wood not identified. E.R.237H.
- 6 Part of seat frame (?) with remains of leather on both sides held in place with small iron tacks, the ends shelved and sloping for attachment to protruding members, greatest thickness five-eighths of an inch, wood not identified. See Vol. I, p. 36-37. E.R.205.
- 7 Shaped fragment, possibly part of molding from a pew end, thickness one and seven-sixteenths inches, wood not identified. E.R.243S.
- 8 Rear leg from arm (?) chair with brass caster attached by three small iron nails, the leg rhombic at base and with pronounced rake, the wood unidentified and badly burnt at the broken end. See Vol. I, p. 38. E.R.209.
- 9 Leg, rear, from side chair, split at the broken end but evidence of rake discernible, wood not identified. E.R.243S.
- 10 Pulley wheel from window sash, boxwood with brass bush, thickness seven-sixteenths of an inch. E.R.243W.
- 11 Oboe fragment, boxwood with two brass stops. See Vol. I, p. 39. E.R.205.

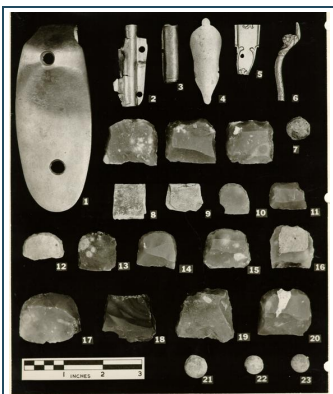


Figure 10

Figure 10

- 1 Butt plate, brass, from musket, the butt tang terminating in small bud-like finial resembling that of the British infantry musket, (*Peterson*, type 1, p. 161) but possessing only one ornamental offset along the length of the tang. A flat projection extending from the back of the tang fitted into the stock and was pierced to receive a retaining pin. Two screw holes pass through the butt plate. A maker's mark "N" is stamped on the inside of the plate. E.R.207.
- 2 First thimble, trumpet-shaped, brass, from musket; two pin holes on either side, crudely made. E.R.332.
- 3 Second thimble, brass, from musket; cylindrical with single hole at top for mounting. E.R.221.
- 4 Escutcheon plate, brass, resembling that of the British infantry musket (*Peterson*, type 1 & 2, p. 161) hollow tang on the back with internal screw thread for mounting. A rectangular stamped mark appears on the back and might read "R R". E.R.191A.
- 5 Key plate, fragment, brass, probably from pistol; roughly engraved with foliate motif. E.R.257A.
- 6 Knuckle bow, upper terminal fragment, brass, from small sword; terminal ornamented with molded cornucopia. E.R.263.
- 7 Three honey-colored musket flints ¹and lead ball ²found together in a stump hole east of the Hay residence. It is believed that flints of this shape and color are of French origin. E.R.347.
- 8 Folded lead strip used to grip musket flints in the jaws of the cock. E.R.231B.
- 9 Folded lead strip used to grip musket flints in the jaws of the cock, teeth marks on both faces. E.R.263.
- 10 Flint, pistol, honey-colored. E.R.243.
- 11 Flint, pistol or sporter, honey-colored. E.R.230C.
- 12 Flint, perhaps from horse pistol or carbine, dense grey. E.R.231B.
- 13 Flint, pistol, grey, extremely thin. E.R.205.
- 14 Flint, horse pistol or carbine, honey-colored. E.R.231C.
- 15 Flint, carbine, honey-colored. E.R.263.
- 16 Flint, carbine or musket, horn colored, with part of lead pad adhering to one side. E.R.230C.
- 17 Flint, musket, grey. The rounded back is comparable to standard French forms, but not to the English. (*Peterson*, p. 228). E.R.200.
- 18 Flint, musket, grey with rust-colored striations. E.R.228.
- 19 Flint, large musket, grey. E.R.230B.
- 20 Flint, musket, honey-colored. E.R.237A.
- 21 Ball, lead, diameter 1.5 cms. E.R.230C.
- 22 Ball, lead, diameter 1.25 cms. E.R.231A.
- 23 Ball, lead, diameter 1.25 cms. E.R.230C.



Figure 11

Figure 11

- 1 Musket lock, in poor state of preservation, the character of the tall, slotted and pierced flint screw suggests that it may be of American manufacture in the Revolutionary period. E.R.230C.
- 2 Frizzen from musket of Revolutionary period but uncertain type. E.R.297A.
- 3 Musket lock, in heavily rusted condition, the pan open and the cock forward in the position of No. 1. Type indeterminate. E.R.243.
- 4 Plate and pan from flintlock musket of uncertain type. E.R.231C.

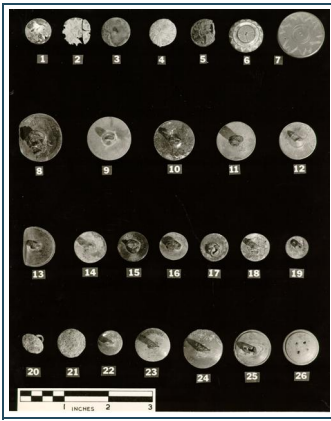


Figure 12

Figure 12

- 1 Button, gilt brass, convex, with bone back pierced by four holes. E.R.209.
- 2 Button, gilt brass face elaborately molded, design of cross and sunburst in style of Coldstream Guards, originally with bone back. E.R.256B.
- 3 Button, brass, tin plated, ¹stylized floral ornament chased on face around concave center; shallow cone seat for brass wire shank. E.R.303.
- 4 Button, brass, tin plated, two piece convex face with molded Catherine wheel ornament, shank missing. E.R.337.
- 5 Button, convex, brass face with repousse decoration in elaborate Catherine wheel form, bone back with brass loop. E.R.283.
- 6 Button, convex, gilt brass, repousse ornament copying wire decoration, wooden back with four stitching holes. E.R.293.
- 7 Button, flat face, tin plated brass, chased ornament in same basic style as No. 3. The back concave raised in center and with brass loop. E.R.254E.
- 8 Button, bronze, plain slightly convex face with tooled edge, the back with circular raised lug in center housing base of iron loop. E.R.334.
- 9 Button, brass, tin plated, flat, no decoration, shallow conical seat for brass loop. E.R.293.
- 10 Button, brass or copper, tin plated, flat face, slightly concave reverse rising in center to wide brass loop. E.R.256A.
- 11 Button, brass or copper, originally tin plated, similar in shape to No. 10, but with thick iron loop. E.R.257A.
- 12 Button, as No. 9, but smaller. E.R.293.
- 13 Button, thin brass, flat, tooled edges back and front, brass loop braised to reverse. E.R.293.
- 14 Button, brass, tin plated, flat face, back slightly raised to seat tall brass loop. E.R.192.
- 15 Button, brass or copper, originally plated, flat face with rounded edges, the back concave with domed seat for wire loop now missing. E.R.293.
- 16 Button, brass, tin plated, flat face, reverse with slightly raised seat for iron loop. E.R.257A.
- 17 Button, brass, probably originally plated, flat face, reverse with slightly raised seat for large brass wire loop. E.R.257A.
- 18 Button, brass, originally plated, flat face with beveled edges, strong brass loop on the reverse. E.R.243C.
- 19 Button, brass, tin plated, flat face with beveled edges, reverse slightly concave, braised brass loop. E.R.303.
- 20 Button, brass, tin plated, two piece convex, brass wire shank. The face is much corroded but was probably decorated. The reverse, however, is remarkably well preserved, suggesting a different composition for the two parts. This is an early 18th century type. (*Calver & Bolton*, p. 228, Nos. 10 & 12). E.R.337.
- 21 Button, brass, two piece plain convex face, bone back missing. E.R.230E.
- 22 Button, brass, tin plated, back only of two piece button, brass wire loop. E.R.200.
- 23 Button, brass, back only from two piece button, convex with brass shank with thread hole through it. E.R.224A.
- 24 Button, brass, tin plated, back from two piece button, slightly convex and loop molded as part of the back. E.R.247C.
- 25 Button, bone back from two piece specimen, the edge grooved to receive the rim of the face; flat brass wire loop passed through central hole and twisted. E.R.237A.
- 26 Button, bone back as above, but with four thread holes instead of wire loop. E.R.243K.

For the broadest survey of eighteenth century button forms, particularly those of military character, see *Calver & Bolton's History Written with Pick & Shovel*, 1950, New York Historical Society.

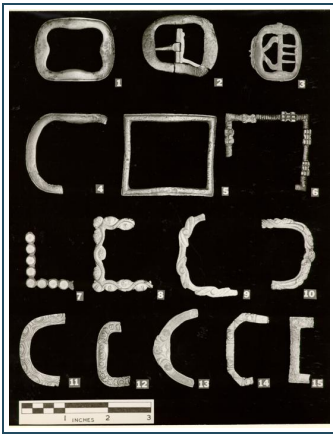


Figure 13

Figure 13

- 1 Shoe buckle, brass, pronounced curvature. E.R.229.
- 2 Shoe buckle, brass, similar type to No. 1. Harp-like attachment for mounting to shoe as Fig. 14, No. 14, but with only single brass tang to left, iron axle. E.R.191.
- 3 Knee buckle, brass, tin plated, triple brass tang, back-to-back S-type mount for attachment to fabric. (See also Fig. 15, No. 13). E.R.205.
- 4 Shoe buckle, fragment, brass, simple tooled edge similar to Nos. 1 & 3. E.R.237A.
- 5 Shoe buckle, high copper content, cast groove around the edge. E.R.209.
- 6 Shoe buckle, two fragments, cast brass, unusual hatched pad ornament. E.R.191 and E.R.243L.
- 7 Shoe buckle, fragment, brass set with glass "stones" colored red behind, perhaps to simulate rubies. This is a small buckle with its central pivot behind the right hand surviving gem. E.R.231C.
- 8 Shoe buckle, fragment, brass, with cast scroll and winged cherub ornament. E.R.236A.
- 9 Shoe buckle, fragment, high copper content, molded and chased circle and groove ornament. E.R.268A.
- 10 Shoe buckle, oval, fragment, high copper content, elaborately molded floral and foliate scroll ornament. E.R.256A.
- 11 Shoe buckle, oval, fragment, brass, molded scroll and cherub (?) ornament. E.R.192.
- 12 Shoe buckle, fragment, brass, with elaborately molded floral and foliate ornament. E.R.200.
- 13 Shoe buckle, oval, fragment, very thin brass silver-plated, molded floral ornament. E.R.230C.
- 14 Shoe buckle, fragment, brass, ornamented with molded wreaths and rough grooves. There is a similarity of style and color with that of No. 6. E.R.192.
- 15 Shoe or knee buckle, fragment, high copper content, molded ornament now much decayed. (*Calver & Bolton*, p. 221, No. 5). E.R.205.

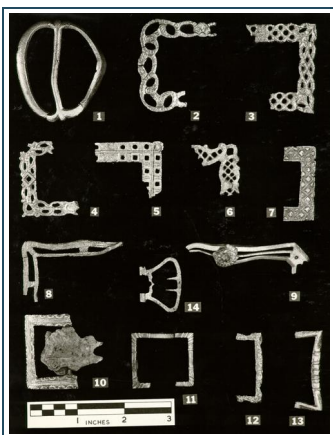


Figure 14

Figure 14

- 1 Buckle, waist or baldrick, cast brass. E.R.233.
- 2 Shoe buckle, fragment, cast brass with some chasing. E.R.254E.
- 3 Shoe buckle, fragment, cast, with high copper content, traces of molded foliate ornament. E.R.230F.
- 4 Shoe buckle, fragment, cast, with high copper content, molded geometric ornament. E.R.237J.
- 5 Shoe buckle, fragment, cast brass, molded rope, feather and scroll ornament; pronounced curvature over the shoe. E.R.192.
- 6 Shoe buckle, fragment, cast brass in openwork design. E.R.263.

- 7 Shoe buckle, fragment, high copper content, cast diamond ornament. E.R.230C.
- 8 Shoe buckle, fragment, high copper content; apparently broken in manufacture and braised (close to right end and bottom left fracture). E.R.231A.
- 9 Shoe buckle, fragment, brass openwork octagonal frame with applied copper rosettes, silver plated, at corners and center. The silvering around the edge of the surviving rosette gives the appearance of set diamonds. E.R.293.
- 10 Shoe buckle, fragment, brass, cast ornament, iron moving parts. See No. 14. E.R.192.
- 11 Shoe or knee buckle of small size, two fragments, cut ornament, high copper content. E.R.243C and E.R.243K.
- 12 Shoe buckle, copper, with sculptured exterior edge. E.R.252C.
- 13 Shoe buckle, brass, butterfly form with cut ornament. E.R.200.
- 14 Harp-like frame from shoe buckle, brass, with two tangs. A second section with only two long tangs extended to the left and was mounted on the same central axle. The corroded iron lump attached to No. 10 has the harp to left and the double tang extending to right. E.R.231D.

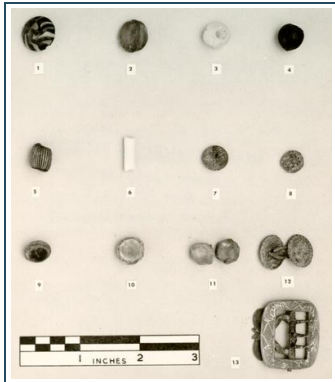


Figure 15

Figure 15

- 1 Button, millefiori glass in dark and pale blue, faceted conical face, brass wire loop anchored into flat back. Probably Venetian. E.R.247F.
- 2 Gem or bead, pale blue glass, conical back, faceted face and flat bezel. While it would seem that this object was originally mounted in a piece of cheap jewelry, it possesses two parallel holes that pass through the length of the back and which could be used to string it as a bead. E.R.243C.
- 3 Bead, opaque white glass, single hole, crudely faceted on all sides. E.R.231C.
- 4 Bead, deep blue glass, somewhat pear-shaped, single hole. Possibly Venetian. E.R.237.
- 5 Bead, millefiori glass, deep blue with thin stripes of white, crudely made, single hole. This is a typical Venetian bead, a type common in the 17th century and earlier, and one that frequently figured among Indian trade items. E.R.231B.
- 6 Bead, opaque white glass, tubular, single hole. This form was frequently used in trade with the Indians. E.R.231D.
- 7 Button or gem of a red vitreous material, conical at one side and hollow at the other. E.R.325.
- 8 Gem, pale blue glass, silvered on the conical back, flat upper surface. From a cheap item of jewelry, such as a shoe buckle. E.R.231D.
- 9 Sleeve button, brass set with a blue glass "stone" with convex surface; small oval loop for link projecting from rounded brass back. E.R.240.
- 10 Sleeve button, pewter set with glass "gem" silver-backed, slightly raised face, the pewter back with its loop missing. E.R.243K.
- 11 Sleeve buttons, brass set with silver-backed glass "gem"; small oval loops extend from the rounded backs for attachment to link. These identical buttons were found in the same stratum, but were about eighteen inches apart, and thus could not have been linked when thrown away. E.R.337A.
- 12 Sleeve link, oval brass buttons engraved with floral ornament, slightly convex face; oval link joining small round loops attached to back of each button. The oval sleeve button is a form that came into popularity in the second half of the 18th century. (*Calver & Bolton*, p. 225, P1.XI, No. 5). E.R.230F.
- 13 Knee buckle, brass, silver or tin plated, elaborately chased surface in diamond and leaf motif. Iron axle, and moving parts as described for Fig. 13, No. 3. E.R.355C.

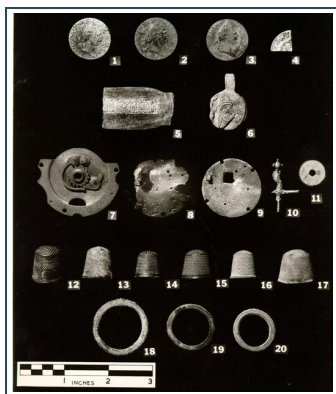


Figure 16

Figure 16

- 1 Virginia halfpenny, copper; obverse: portrait of George III to right, legend: GEORGIVS III · REX; reverse: arms of Virginia, crowned, seven string harp, legend: VIRGINIA · 1773 · Newman, type 2E. It should be noted that though minted in 1773, these coins were first issued in the colony in March, 1775. E.R.301.
- 2 Virginia halfpenny, copper; obverse: portrait of George III to right, legend: GEORGIVS III · REX; arms of Virginia, crowned, six string harp, legend: VIRGINIA · 1773 · Newman, type 5B. E.R.290C.
- 3 Virginia halfpenny, copper; obverse: portrait of George III to right, legend: GEORGIVS III · REX; reverse: arms of Virginia, crowned, seven string harp, legend: VIRGINIA · 1773 · Newman, type 22S. E.R.322A.
- 4 Spanish 2 real, silver, quarter of, perhaps 1724 minting. E.R.231D.
- 5 Lead or type-metal unit bearing the retrograde legend FOUR S..... This piece was intended for use in the printing of paper money issued by the Virginia Assembly during the French & Indian War in the 1750's. The money was printed by William Hunter at the Printing Office on the lot south of the Hay property on Duke of Gloucester Street. On that site two objects of this kind were recovered in archaeological excavations in 1956, the first the arms of the Virginia Colony and secondly a border strip bearing the date 1758, both of which were used in the printing of a surviving shilling bill of that date. However, these pieces had been carefully trimmed for setting up as part of a block, whereas the example illustrated here is in the rough cast state and had never been trimmed for use. E.R.230C.
- 6 Lead bale seal for cloth, decorated with a central crest in the form of a coronet beneath the head of an ass to left, an incomplete legend in the exergue appears as follows: R * R. On the reverse is scratched the number 23. E.R.337A.
- 7 Brass plate from watch with main spring ratchet attached, moving parts retained by crude iron screws or rivets. No maker's mark, 18th century. E.R.236A.
- 8 Brass plate from verge watch mechanism, very frail condition, but bearing part of engraved script inscription on the back reading.....London 1746. A triangular vertical post is screwed to the plate to the right of a square aperture and from the post projects a rectangular pierced lug that overlies the square hole. At the left edge of the disc on a line with the aperture is a second smaller standard from which projects the remains of a small brass rod that originally proceeded in the direction of the square hole. To the left of the smaller standard and attached to the edge of the disc was a small triangular filigree ornament that was lost in cleaning. E.R.237H.
- 9 Brass plate from verge watch mechanism similar to No. 8, but without any engraved inscription. The large standard is missing, but a screw hole to the right of the square aperture indicates its position. It will be noticed also that the second smaller standard is less close to the edge of the disc than is that of No. 8. There is no evidence of any filigree ornament having been attached. E.R.237J.
- 10 Brass watch key with large and small square orifices, Rococo ornament on the shank, swiveling ring missing from the upper end. E.R.239.
- 11 Cog wheel, thin brass, used to drive the hour hand of a watch. E.R.230E.
- 12 Brass thimble, thickened rim and gently convex cap. E.R.314.
- 13 Brass thimble, thickened rim and convex cap, the recesses small above the rim, larger towards the cap, and larger still on the cap itself. E.R.364B.
- 14 Small brass thimble, thickened rim and convex cap, plain band above the rim, the recesses slightly wrythen on the body giving them an oval form, but square on the cap. E.R.237J.
- 15 Brass thimble, an incised groove above the flat rim, the cap convex, the body recesses pear-shaped and those on the cap square and much larger. E.R.252.
- 16 Small brass thimble, thickened rim and convex cap, the body recesses round and those on the rim square. E.R.237B.
- 17 Brass thimble, broad and squat, a thin rounded rim, the cap convex, very small circular recesses on the body and larger of the same shape on the cap. E.R.243E.
- 18 Curtain ring, cast brass. E.R.237A.
- 19 Curtain ring, cast brass. E.R.231B.

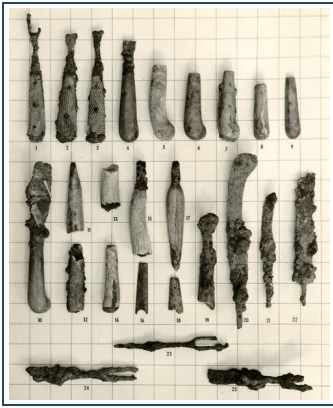


Figure 17

Figure 17

- 1 Table fork, iron, two-tined, flat tang covered by plates cut from antler and attached with three rivets. A curved iron cap covers the end of the handle. E.R.247G.
- 2 Table fork, iron, two-tined, flat tang covered by scored bone plates and attached with two rivets. An iron cap covered the end of the handle. E.R.243K.
- 3 Table fork, iron, two-tined, flat tang covered by bone plates attached with two rivets. The plates were ornamented with cut hatching and one subsequently marked with three parallel incised lines, probably as a mark of identification. An iron cap covered the end of the handle. E.R.217.
- 4 Table knife, iron, with spread shoulders and ornamental grooving below the tang, the latter within a pistol-gripped bone handle. E.R.247G.
- 5 Cutlery handle, bone, pistol grip. E.R.243T.
- 6 As No. 5, but smaller. E.R.200.
- 7 Cutlery handle comprising a flat iron tang flanked by polished bone plates retained by three iron rivets, pistol grip. E.R.248.
- 8 Small cutlery handle, bone, only slightly pistol-gripped. E.R.228.
- 9 Cutlery handle, bone, fragment only, only slightly pistol-gripped. E.R.247G.
- 10 Table knife in advanced state of corrosion, with pistol-gripped bone handle. E.R.243M.
- 11 Cutlery handle, bone, slightly concave at the butt end. E.R.209.
- 12 Cutlery handle comprising a flat iron tang flanked by semi-circular sectioned bone plates apparently attached by iron rivets that do not extend to the exterior. Flat ended. E.R.237J.
- 13 Fragment of cutlery handle, antler, with iron cap at butt end. E.R.192A.
- 14 Small and delicate cutlery handle, antler, with convex iron cap at the butt end. E.R.247C.
- 15 Table fork fragment, bulbous iron shaft with solid shoulders and antler handle; originally with iron cap at butt end. E.R.195.
- 16 Tortoise shell decorative plate with semi-circular hole at the broken end, possibly from an item of cutlery but perhaps from a musical instrument. E.R.243K.
- 17 Fragment of iron item, possibly cutlery, with pod-like polished bone handle, the latter channeled on both sides. E.R.247F.
- 18 Bone or antler plate fragment from cutlery handle. E.R.243R.
- 19 Table fork, iron, with flat tang flanked by bone plates held by iron rivets. E.R.231D.
- 20 Table knife, iron; rounded, upswept blade end, shoulders indeterminate, and with tapering rectangular-sectioned tang. E.R.243E.
- 21 Knife, iron, possibly adapted from a broken table knife, slightly crescent-shaped cutting edge, flat shoulders and long rectangular-sectioned tang. E.R.233.
- 22 Table knife, iron, blade broken; solid, probably octagonal shoulders and octagonal-sectioned tang. E.R.192.
- 23 Table fork, iron, two-tined, shaft delicate and spreading towards handle, rectangular-sectioned tang. E.R.233.
- 24 Table fork, iron, two-tined, shaft of uncertain form, flat tang originally flanked by bone plates. E.R.243K.
- 25 Table fork, iron; two-tined, with spoon-shaped area below the shaft (characteristically later than the preceding examples), shaft of uncertain form, flat tang originally flanked by bone plates. E.R.244B.

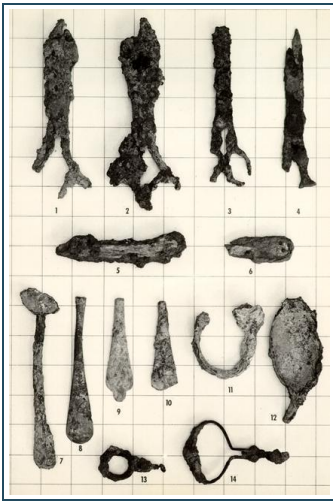


Figure 18

Figure 18

- 1 Scissors, iron; straight, flat-ended blades, shafts spreading outwards and the loops with their greatest thickness at right angles to the blades. This form was present in a refuse pit of the second quarter of the 18th century at Tutter's Neck (T.N.23) and in an unstratified deposit on the site of John Greenhow's store on Duke of Gloucester Street. E.R.221.
- 2 Scissors, iron, similar to the above, but the blades slightly more pointed. E.R.191A.
- 3 Small scissors, iron, blades pointed, shafts slightly bulbous and the loops with their greatest thickness at right angles to the blades. E.R.237C.
- 4 Scissors, iron, of similar type to No. 3, but somewhat larger. E.R.237A.
- 5 Handle of iron pocket knife with riveted antler plates on either side, and convex iron butt terminal. E.R.363B.
- 6 Fragment of iron handle of iron pocket knife, the iron plates originally covered by bone that has turned the former green. E.R.237N.
- 7 Handle and part of bowl of pewter spoon, the handle with spinal ridge and terminating in a molded spatula form, vestigial rat tail on the back of the bowl. E.R.237G.
- 8 Handle of pewter spoon, molded spatula terminal, a rough X on the back. E.R.247G.
- 9 Handle of pewter spoon with elongated trefoil terminal, the shaft thick and round on the upper face, the back marked with a roughly incised W. E.R.243C.
- 10 Handle of pewter spoon with slight spinal ridge and molded spatula terminal; a crowned X stamped on the back. (See *Michaelis*, p. 98). E.R.247G.
- 11 Remains of pewter spoon, possibly with spinal ridge and trefoil terminal. E.R.230H.
- 12 Bowl of pewter spoon with vestigial rat tail. E.R.238.
- 13 Corkscrew, iron, with ring handle and only part of worm surviving. E.R.254A.
- 14 Folding corkscrew, iron, with handle in form of jews' harp; two complete turns of worm surviving. (See *Country Life*, March 10, 1960, p. 499). E.R.247F.

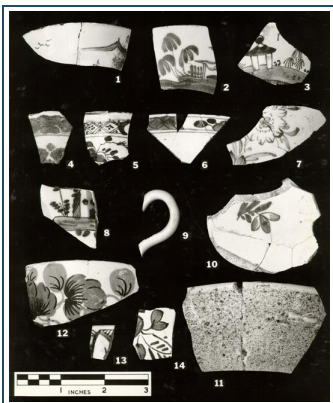


Figure 19

Figure 19

- 1 Hemispherical cup or small bowl, rim sherds only, English delftware, Chinoiserie ornament in cobalt. E.R.243R.
- 2 Small bowl, rim sherd, English delftware, Chinoiserie ornament in cobalt. E.R.243L.
- 3 Hemispherical cup, very similar in style to No. 1. E.R.243L.

- 4 Hemispherical cup, English delftware, with crude floral ornament in cobalt. E.R.233.
- 5 Cup, English delftware, blue floral ornament in Chinese manner, the rim edged with a red-brown iron oxide copying Chinese porcelain, E.R.206.
- 6 Bowl, English delftware, seen from interior showing rim zone of geometric and floral reserves, the exterior coated with manganese stipple, E.R.192, 234C. Other sherds E.R.191, 243.
- 7 Bowl or bottle, body fragments only, decorated in blue with floral ornament using a minimum of brushwork. E.R.233, 234B.
- 8 Saucer, base fragment only, English delftware, Chinoiserie ornament in cobalt; vestigial footring only and the base raised within. E.R.229.
- 9 Cup handle, English delftware. E.R.243C.
- 10 Bowl, basal fragments, English delftware; almost certainly bottom of No. 6, pale blue flower on interior, manganese stipple on exterior. E.R.191, 192.
- 11 Bowl, English delftware, manganese stipple on the exterior, horizontal bands of dark blue below the rim and above the base of the interior. E.R.200.
- 12 Hemispherical bowl, Liverpool delftware, polychrome ornament in the Fazackerly manner, painted in blue, fired, then painted in green, red and black and fired again. E.R.237J.
- 13 Bowl, fluted wall, rim sherd only, English delftware, polychrome decoration in blue, red and green. Late 17th to early 18th century. E.R.191.
- 14 Punchbowl (?), wall fragment only, English delftware, floral pattern in cobalt outlined in manganese. E.R.256A.



Figure 19a

Figure 19 a

1. Plate, English delftware, no footring, decorated with simple foliate ornament around a stylized squirrel squatting low on its haunches. The complete animal is missing from this plate, but is supplied from fragments of others from the site. Fragments of identical plates from E.R.191, 192, 195, 198, 202A, 233, 237A, 237M, 243C, 247K, 247M, 264A, 364B. For an extremely close parallel, see Garner, Pl. 38A, attributed to Lambeth circa 1720. E.R.243K, 243M.
2. Plate, English delftware, no footring but base raised, decoration of floral and foliate ornament around a pair of gate posts painted in shades of rich blue. The posts are considered to be characteristic of Lambeth in the mid-eighteenth century. E.R.192, 195, 198, 206, 228, 243C. Other fragments from E.R.191, 200, 209, 231D, 233, 237.
3. Plate, English delftware, no footring but base raised, decoration of floral and foliate ornament around a fence reminiscent of No. 2, but the design painted only in blue outline. A possible parallel for the style of ornament is provided by Garner, Pl. 44B and 46B attributed to Lambeth and dates circa 1740 and 1750 respectively. E.R.198, 209, 243C, 243N, 247F. Other fragments from E.R.191, 205, 237K, 243K, 243L, 243M, 364A, 364B, 369B, 369D.
4. Delftware plate of uncertain origin, the body buff to pink, unusual rounded lower wall with small raised base, the decoration in shades of dull blue, the central device a vase of flowers somewhat reminiscent of Rouen. Other fragments of this plate were found after the photograph was taken and these include the top of the central motif which includes a wavy ribbon rather similar to that used beneath the squirrel of No. 1. E.R.200, 228, 229, 233, 247C, 337, 337A. Fragments of at least five plates were found, other sherds coming from E.R.191, 192, 195, 198, 202, 202A, 209, 230D, 230F, 231D, 243, 243C, 243K, 243M, 247E, 247G, 254D, 364C.
5. Plate, English delftware, base raised, decoration of Chinese lake scene with background of English houses, one boatman extending onto left side of marly, another in lower field area, painting in a rich blue. An almost exact parallel appears in Garner, Pl. 59B, where it is attributed to Bristol, circa 1760. E.R.208, 243. A larger plate with a comparable design came from E.R.243K, 243M.
6. Plate, English delftware, base raised, floral ornament of uncertain form in pale drab blue; wall ornament in Chinese manner roughly paralleled by Garner, Pl. 87, (lower) attributed to Liverpool, circa 1760. A roughly drawn series of wavy lines on back of marly. E.R.191, 192, 195, 200, 206. There are at least two examples from the site, other sherds from E.R.191A, 195A, 228,

230C, 231A, 231C, 235, 243K, 364B.

- 7-8. Plate, English delftware, V-shaped footring, mimosa pattern in deep blue, blue dashes and other devices of uncertain form on back of marly. E.R.237H, 243.
9. Bowl, English delftware, square U-shaped footring, glaze pale blue, poly chrome floral ornament in red, blue and green. Almost certainly Bristol circa 1720; close parallel from the Bassett Hall well. Additional fragments found after the photograph was taken. E.R.364B.
10. Cooking bowl, Rouen faience, pale pink body, tin-glazed on the interior, brown lead glaze outside, the wall thickened with a heavy cordon below the rim. E.R.230B.
11. Cooking bowl, Rouen faience, details as above but the tin glaze slightly blue and with half of a 3-shaped strap handle below the rim. For parallel see Antiques, Vol. LXXVIII, Dec. 1960, p. 559.
12. Plate, Rouen faience, bat-molded, no foot, deep pink body with bluish tin glaze on the upper surface and brown lead-glazed back, central floral ornament and border in blue outlined in dark blue-black. Illustrated Antiques, Vol. LXXVIII, Dec. 1960, p. 561. E.R.237C, 237J, 238.

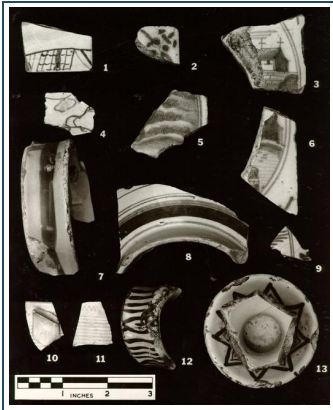


Figure 20

Figure 20

1. Delftware tile ornamented in cobalt with ship's rigging and part of a sail. This is an important sherd, coming as it undoubtedly does from a delft seascape panel that may have been either a wall decoration or a business sign. E.R.209.
2. Delftware tile, corner fragment only, a common blue design that almost certainly occurred on No.
3. E.R.191. 3. Delftware tile, probably a rural scene in cobalt with motif of No. 2 in the four corners. E.R.209. (See also No. 5).
4. Delftware tile, edge fragment with uncertain cobalt design, possibly from a panel as No. 1. E.R.209.
5. Delftware tile with part of rural scene in blue; possibly part of No. 3. E.R.192.
6. Delftware tile, uncertain design in cobalt, similar form to Nos. 3 and 5. E.R.191, 348A.
7. Mug handle, English delftware, somewhat concave in section and decorated with a single vertical stripe in blue. E.R.243M.
8. Bowl, English delftware, base fragment only, good quality glaze ornamented with bands of blue. E.R.229.
9. Colander, English delftware, grill fragment ornamented in blue. E.R.230.
- 10-11. Mug, bright yellow lead-glazed earthenware, possibly Staffordshire, decorated below the rim with zig-zag and band of incised lines. Probably early 19th century. E.R.293, 191 respectively.
12. Handle, English delftware, probably from mug or posset pot decorated with horizontal blue dashes. E.R.228.
13. Base of small vase, English (?) delftware, pedestal form ornamented with chevrons in cobalt and two thin lines encircling the waist. E.R.200.



Figure 21

Figure 21

- 1 Rim of English white saltglaze mug, the lip coated with a brown slip. The mug is created from a tight-grained grey clay flecked with black and coated with a white slip. The fact that the slip tended to fall away from the lip to reveal the grey body beneath caused them to be coated with brown slip. This has still occurred below the brown slip on this example. The body is the earliest form of mass produced English white saltglaze and dates within the years c. 1710-1730. E.R.243C.
- 2 Rim sherd from pitcher or mug with flaring mouth, the body as No. 1 and the lip brown slipped. E.R.243L, 247C.
- 3 Rim sherd from mug body as No. 1, an ornamental groove around the body seven-eighths of an inch below the lip. E.R.191.
- 4 Rim sherd from mug, body as No. 1, but the brown slip somewhat deeper. E.R.238, 362B.
- 5 Rim and handle sherd from mug, body as No. 1, the lip slightly everted and only a narrow band brown. However, as in No. 1, the white slip has fallen away below the brown to expose the grey body. E.R.243.
- 6 Rim and collar sherd from teapot, the body whiter and lead glazed on the exterior, but retaining a light brown slip at the lip. E.R.191.
- 7 Base of small bowl or saucer with diminutive footring, body as No. 1. E.R.243.
- 8 Basal sherd of mug, body as No. 1, showing flat footring and the base raised within it, the typical shape for such vessels of this early saltglazed ware. E.R.237A.
- 9 Basal sherd from small coffee can, body as No. 1, the foot slightly thickened and the base as No. 8. E.R.337A.
- 10 Handle and body sherd from English white saltglaze mug of fine quality, the wall extremely thin and ornamented with grooves around it at the upper junction of the handle, the latter oval in section and with two spinal grooves. E.R.230C.
- 11 Rim and handle sherd from small English white saltglaze bowl, the lip everted and the handle strapped parallel with it, reeded and pressed back on itself at either end. This is a most unusual form. E.R.237J. Another bowl similar in character, of hemispherical form, possesses a plain, round sectioned handle that is squeezed into small wings at either end. There is a pair of ornamental grooves around the body below the handle and a rouletted line above it. (Not illustrated). E.R.369H.
- 12 Fragment of small cup handle, English white saltglaze body covered with a clear lead glaze. E.R.237C.
- 13 Handle fragment from small English white saltglaze coffee can, the handle reeded and pinched at the terminal in the manner characteristic of the ware. The body at the lower junction of the handle appears to be ornamented with a band of grooves. E.R.197.
- 14 Handle terminal from English white saltglaze mug or tankard, thick body, the handle reeded and with a terminal characteristic of the ware. E.R.192.
- 15 Handle fragment, possibly from same mug as No. 14, the reeding creating a single spinal ridge somewhat thicker than the others - a feature of both fragments. E.R.191, 192, 233.
- 16 Handle fragment from English white saltglaze bodied pitcher (?), the ware thin and lead glazed, the handle elaborately and delicately reeded. E.R.243C.
- 17 Handle fragment, lead-glazed English white saltglaze body, from vessel of uncertain form. E.R.229.
- 18 Handle fragment, fabric similar to the above, ornamented with pronounced spinal ridge creating an almost triangular section. E.R.238.
- 19 Handle fragment, fabric as No. 17, round-sectioned with pinched thumb-pad at shoulder. (Inverted in illustration). E.R.233.

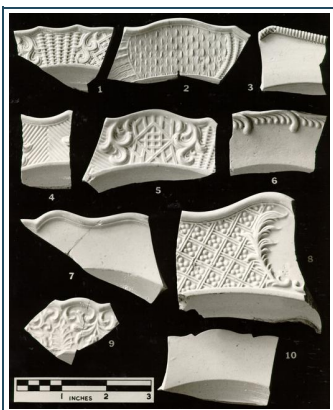


Figure 22

Figure 22

- 1 Rim sherd of English white saltglaze plate, the rim molded with a pattern of basket and diaper panels divided by foliate scrolls; good quality molding and probably early of its period. E.R.230F.
- 2 Rim sherd of English white saltglaze plate, the rim molded with a pattern of basket, barley and rippled zones. E.R.243C.
- 3 Rim sherd of octagonal English white saltglaze plate, the upper edge thickened and combed into a border of small notches. E.R.243. While this fragment is unstratified, other joining fragments were found in the contexts E.R.364A and 364B.
- 4 Rim sherd of English white saltglaze plate, the rim molded with motifs of foliate scrolls, dividing zones of chevrons and other devices. It is probable that this fragment came from a plate similar to No. 5. E.R.230D.
- 5 Rim sherd of English white saltglaze plate, the rim molded with a pattern of Chinese fences, chevrons and basketry, the panels

divided by foliate scrolls. E.R.230D.

- 6 Rim sherd of English saltglaze, slightly creamy in color, the edge decorated with molded feather-pattern in the manner of cream-colored earthenwares. E.R.199.
- 7 Rim sherd of large English white saltglaze plate, the edge thickened and molded in the manner of Queen's Ware (*Ceramic Circle Cat.* , Pl. 20, No. 107). E.R.237A.
- 8 Rim fragment from large charger of English white saltglaze, the rim molded with zones of dot and diaper pattern and with foliate scrolls. It is possible that other devices may have alternated with the design depicted on this sherd. Two joining fragments attach to the left of this sherd, but add no further information. E.R.369, 243.
- 9 Rim sherd of English white saltglaze plate, the rim molded with an elaborate pattern of leaves, scrolls and floral devices. E.R.243G, 243K.
- 10 Rim sherd of English white saltglaze plate, the rim plain, but the edge wavy and notched. E.R.230C.



Figure 23

Figure 23

- 1 Plate, English white saltglaze, marly decorated in barley pattern. E.R.191, 233, 237F, 243A.
- 2 Soup plate, English white saltglaze, marly decorated in dot, diaper and basket motif. E.R.228, 231C.
- 3 Plate, English white saltglaze, plain marly but with incised line at rim. E.R.230D, 243F and K, 247D.
- 4 Plate, English white saltglaze, plain marly with "rope" edge. E.R.237J.
- 5 Large serving plate, English white saltglaze, ornament as No. 4. E.R.237F.
- 6 Gravy boat, English white saltglaze, molded in dot, diaper and basket motifs with foliate scrolls. E.R.209, 230C.

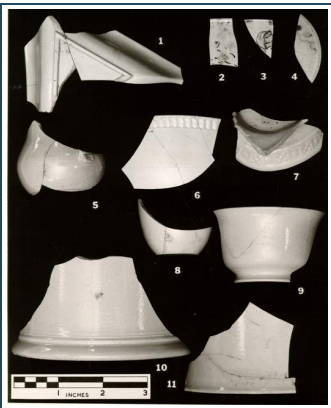


Figure 24

Figure 24

- 1 Triangular sweetmeat dish of English white saltglaze, square-molded triangular foot, the wall of the dish having an ogee curve. (Illustrated from beneath). No parallels for this unusual form have been found, though four or more examples were recovered from the Hay excavations. E.R.195, 337. Other fragments came from the following contexts: E.R.228, 243C, 233, 243, 245, 192, 204, 337.
- 2 Rim fragment of small mug or can, English white saltglaze with enameled floral decoration in green and pink outlined in black. E.R.256A.
- 3 Rim fragment from small mug or can, English white saltglaze with enameled leaf ornament in green outlined in black. E.R.243E.
- 4 Lid fragment from teapot, English white saltglaze ornamented with blue enameled flowers and green foliage outlined in black. E.R.200.

- 5 Body and handle fragments from small pitcher, English white saltglaze body with exterior lead glaze, the handle strapped and pinched in the characteristic saltglaze manner at the terminal; evidence of a single groove above the spreading foot. E.R.209, 230C.
- 6 Body and rim fragment of white saltglaze bowl, the lip slightly everted and rim ornamented with a dog tooth motif; the body extremely thin. E.R.243C.
- 7 Base of vessel of uncertain form, white saltglaze body with exterior lead glaze, the vessel made in a two piece mold and the foot added afterwards, the latter ornamented with a band of alternating star and dot panels. E.R.247D.
- 8 Base and body fragments of pharmaceutical ointment pot, very thin English white saltglaze body with exterior lead glaze. The base is flat and the rim would have been everted and rolled. E.R.221.
- 9 Cup, English white saltglaze, flaring rim, ogee curve to body and the footring delicately spreading, the base flat and raised within the ring. E.R.192.
- 10 Base fragment from large mug or tankard, thin English white saltglaze of good quality, the footring spreading and with an ovolo above, the base flat and raised within the ring. E.R.243M.
- 11 Base fragment of tankard or mug, thin English white saltglaze body with exterior lead glaze, the vessel flaring towards the base, no footring, but the bottom raised within. E.R.243L.

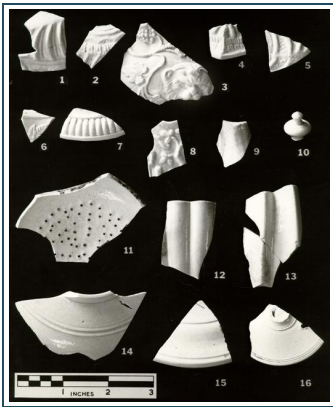


Figure 25

Figure 25

- 1 Mold ornamented sherd of English white saltglaze decorated with pillar molding; possibly from sauceboat. E.R.243C, 243K.
- 2 Mold ornamented sherd of English white saltglaze, decorated in Greek key, rope and pillar motifs; from vessel of uncertain form. E.R.200.
- 3 Elaborately molded rim and body sherd of English white saltglaze, the ware very thin and decorated with lion mask and vine motifs; probably from sweetmeat bowl. E.R.364A.
- 4 Rim sherd from octagonal (?) teapot lid, English white saltglaze ornamented with Greek key border and pillar molding. E.R.200.
- 5 Mold ornamented sherd of English white saltglaze, probably from same vessel as No. 1. E.R.192.
- 6 Body sherd, English white saltglaze, the body dry, with molded foliate ornament, possibly from pitcher. E.R.243K.
- 7 Rim sherd of teapot lid, English white saltglaze, with molded dog-tooth ornament above the rim. E.R.243.
- 8 Mold ornamented sherd of English white saltglaze, extremely thin, possibly part of the handle of a porringer. The decoration seems to take the form of a tree and to the left of it a standing figure. E.R.200.
- 9 Base and fore-edge from molded English white saltglaze sauceboat, the exterior lead-glazed, ornamented with foliate scrolls and panels of stars and of chevrons. The moldmark has been smoothed from the junction of the two sides. E.R.228, 243C, 243M, 269E.
- 10 Knov from teapot lid, English white saltglaze body with lead glaze. E.R.231C.
- 11 Base and wall fragment of saucer-shaped punch strainer with small footring, the holes driven through after the foot was formed. The *Boston Gazette*, April 16/23, 1733, contains an advertisement offering " ...white Flint Cups and Saucers...Punch Strainers and Sauce Porringers...". E.R.243N.
- 12 Rim and wall fragment of fluted jelly mold in thin English white saltglaze. E.R.227A.
- 13 Rim and body fragments of swirling-ribbed jelly mold in thick English white saltglaze body covered on both sides with a yellowish lead glaze. Approximate diameter: seven inches. E.R.200, 231C, 231D.
- 14 Collar and shoulder fragment from English white saltglaze teapot, the curved fracture in the foreground represents the position of the spout, double cordon and groove ornament around the shoulder, the collar a quarter of an inch in height. E.R.247C.
- 15 Teapot or punchpot lid fragment, thick and coarse English white saltglaze, the collar half an inch in height, the upper surface of the lid ornamented with concentric bands of increasing thickness. E.R.192A.
- 16 Teapot lid of English white saltglaze, originally with central knob probably similar to No. 10; the rim ornamented with a pair of incised lines; note air hole puncture to right of sherd; the collar five-sixteenths of an inch in height and the lower edge

ornamented with a single encircling groove. E.R.195.



Figure 26

Figure 26

1. Rim and wall sherds from clouded ware bowl ornamented in yellow, grey, brown and green, and with sprigged strawberry leaf, the body cream-colored and extremely thin, the rim slightly everted. Whieldon type. c.1750-1760. E.R.228, 231C, 247C.
2. Bowl of similar character to the above, but without sprigged ornament; clouded ware with a combination of oxides beneath the glaze creating a blending blue-grey, yellow, green and purplish-brown, with the grey predominating on the interior. Whieldon type. E.R.243J, 243K, 243L.
3. Handle terminal from clouded ware tankard, pinched in saltglaze manner, colored in green, grey and purplish-brown with green predominating; the interior coloring less even and glaze largely over the cream-colored body giving a yellow appearance. The latter information drawn from other sherds of the same vessel that are not illustrated. Whieldon type. E.R.243K, 243C.
4. Rim fragment from large dish of clouded ware, the edge decorated with molded "rope" motif in the manner of Fig. 23, No. 5; green and grey predominating on the upper surface, the back yellow splashed with manganese. E.R.191.
- 5-8. Teapot of "Whieldon" type, globular body, the base raised within a small footring; spout and handle missing, yellow interior, the exterior ornamented with vine leaves and grapes, Tudor roses and a cherub's face that appears to be without recorded parallel, the whole splashed with manganese in the tortoise-shell manner. See English Ceramic Circle Catalogue, No. 58. Height, four and one-eighth inches. E.R.191, 228, 237H, 243K, 243M, 248.
9. Crabstock handle from "Whieldon" type teapot, clouded with pale apple green and manganese brown. E.R.238.
10. Handle from teapot of "Whieldon" type, clouded glaze blending manganese brown with blue-grey and green, an ear at the apex of the handle and multiple grooves ornamenting the body of the handle on either side of a flat spinal stripe. E.R.237J.
11. Teapot lid of "Whieldon" type, clouded glaze making use of multiple metallic oxides creating the following colors: black, grey, blue, manganese brown, and a ginger brown; a clear yellow glaze on the underside. There is a central air hole in the center of the lid over which passes a small, round-sectioned handle. The collar beneath this lid is somewhat unusual in that it slopes sharply inward and is concave on its inner side. E.R.237A.

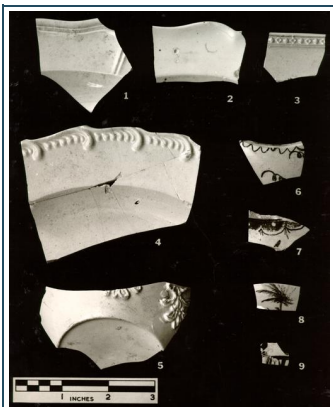


Figure 27

Figure 27

- 1 Rim sherd of soup plate or dish in the Queen's pattern, cream-colored earthenware. *Jewitt*, Vol. II, 349. E.R.247C.
- 2 Rim sherd from plate, pale cream-colored earthenware with wavy edge of the Queen's pattern but without the surface molded ornament of No. 1. Probably post 1780. E.R.221A.
- 3 Rim sherd from octagonal plate, cream-colored earthenware, molded rim ornament of alternating solid and hollow diamonds. E.R.237J.

- 4 Section through plate, cream-colored earthenware, the rim mold-ornamented in the manner known as "feather-edge"; no footring, but the base slightly raised. E.R.243C.
- 5 Base of bulbous pitcher, cream-colored earthenware, body incurving to the base and the latter raised within. The piece possessed a pair of strapped, reeded handles, each terminating at the bottom in a sprigged foliate ornament. Probably Leeds. E.R.208.
- 6 Shoulder and rim fragment of teapot, cream-colored earthenware with overglaze decoration in black. c.1770-1780. E.R.191.
- 7 Shoulder fragment, perhaps from large teapot of shape comparable to *Towner*, Fig. 62A; cream-colored earthenware decorated with a swagged band of over-glaze red outlined in black and with black ornament beneath. c.1780-1800. E.R.191A.
- 8 Body sherd, probably from teapot, cream-colored earthenware, with over-glaze decoration in purple with a palm tree as part of the ornament, the body of good quality and the glaze very yellow. c.1765-1770. E.R.364A.
- 9 Body sherd from teapot, cream-colored earthenware of good quality, transfer-printed in black with the well-known "Tea party", reputed to show Josiah and Sarah Wedgwood drinking tea. *Towner*, Fig. 84. The sherd shows "Sarah's" right shoulder and part of the seat. E.R.231A.

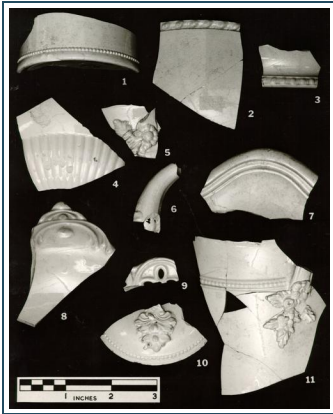


Figure 28

Figure 28

- 1 Base fragment of small mug, cream-colored earthenware, slightly spreading foot below a band of fine beading, the base slightly raised. See *The Connoisseur*, Feb., 1921, p. 89, No. V. for example dated 1775. E.R.237.
- 2 Wall and rim fragments of bowl, cream-colored earthenware, the lip slightly outbent and ornamented with a "rope" pattern of alternating thick and two thin strands, the glaze very yellow. E.R.230C.
- 3 Basal fragment from pitcher or coffee pot, cream-colored earthenware, the base constricted above the foot, the latter with ornament similar to that of the rim of No. 2, the base raised within, c.1780. E.R.191.
- 4 Bowl fragment with figure 3 profile (in the manner of Dragendorff's Form 27 for Samian Ware), cream-colored earthenware, the lower body zone ornamented with molded fluting. Other fragments show that the bowl possessed a straight footring with the base raised within it. See *Towner*, Figs. 40A and 95B. E.R.238, 362C.
- 5 Upper handle terminal from a bulbous mug ornamented on the body with a series of raised bands, cream-colored earthenware. The vessel had a pair of strapped, reeded handles, each terminating with a sprigged floral ornament; probably Leeds. E.R.243K.
- 6 Teapot spout with molded ornament of uncertain form towards its junction with the pot's body, cream-colored earthenware. See *Towner*, Figs. 62A, 66A, 66B. c.1775-1780. E.R.209.
- 7 Rim fragment from tureen or vegetable dish of uncertain form, cream-colored earthenware, glaze very yellow, and probably of late date. E.R.243A.
- 8 Rim and vestigial handle fragment, probably from compotier, cream-colored earthenware, the handle ornamented in the so-called feather-edged manner, the bowl very shallow and possibly shell-shaped in the style of Wedgwood's 1810 pattern book, p. 45, Fig. G. The glaze very yellow. E.R.228.
- 9 Pierced rim fragment from vessel of uncertain form, cream-colored earthenware, perhaps Leeds, the body thin and molding of good quality. E.R.243B.
- 10 Coffee-pot lid, cream-colored earthenware, fine beading above the edge, quarter-inch collar beneath, the lid pierced by an air hole and topped with a floral knob (now missing) over a sprigged floral terminal; probably Leeds. E.R.237D.
- 11 Rim, body and handle fragments of large mug, cream-colored earthenware; the rim somewhat concave and terminating below in a beaded cordon, the body plain; strapped, reeded handles missing, but one elaborate sprigged floral terminal surviving. For a smaller example of c.1770, see *Ceramic Circle Catalogue*, pl.24, No. 117. E.R.243A.



Figure 29

Figure 29

- 1 Dish, Chinese export porcelain, underglaze blue, floral ornament diffused in firing; V-sectioned footring, blue dashes on underside of marly. E.R.191, 192, 195, 233, 337A. Other sherds E.R.204.
- 2 Plate, Chinese export porcelain, floral design in underglaze blue and overglaze red and gold; no footring, but base raised. E.R.209, 320C, 237J, 247C.
- 3 Dish, Chinese export porcelain, underglaze blue floral and geometric ornament; small footring. E.R.191, 192, 195, 231, 243N, 247G, 369J. Other sherds E.R.228, 247F, 369H.
- 4 Plate, Chinese export porcelain, decoration in underglaze blue, floral devices on marly, ju-1 border to base surrounding peony and willow motif; no footring but the base raised. E.R.199, 243K. Other sherds E.R.209, 230C, and F, 243C.
- 5 Cup, Chinese export porcelain, repeating floral ornament in underglaze blue, .U. device in center of interior base with thin blue line at bottom and top of wall, the rim brushed with iron oxide. E.R.243C, E and G.
- 6 Bowl, foot and lower body fragments only, Chinese export porcelain, decoration in underglaze blue, E.R.256.
- 7 Saucer, Chinese export porcelain, willow decoration in underglaze blue, two thin bands below rim; small footring. E.R.209, 230D.
- 8 Saucer, Chinese export porcelain, bamboo and rock design in underglaze blue and hatched zone below the rim; small footring. E.R.195, 243K and L, 247C. Other sherds E.R.198, 228, 231B, 364B, 369D. A similar saucer from 243L.
- 9 Tankard, body and handle fragments only, English Worcester porcelain, floral decoration in underglaze blue. E.R.222, 243C. Other sherds E.R.362B, 369A.

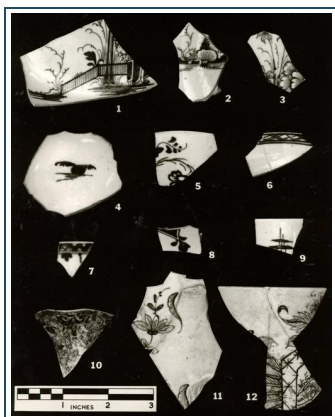


Figure 30

Figure 30

1. Saucer fragment, English porcelain, probably Worcester, decorated in a pseudo-Chinese manner in underglaze blue, with hatching at rim, the body pale green in transmitted light, triangular footring. Fragments of at least four saucers with this design have been found on the site. E.R.243D.
2. Saucer fragment, English porcelain, probably Worcester, decoration continuation of No. 1. E.R.230C.
3. Saucer fragment, as No. 1. E.R.247C.
4. Bottom of cup, English porcelain, Liverpool or Worcester, decoration inside and out in underglaze blue, the base thick and with triangular foot, the body pale green in transmitted light. E.R.237A.
5. Rim and wall fragment of cup, English porcelain, Liverpool or Worcester, peony pattern in underglaze blue, a hatched zone below the rim on the interior, very thinwalled; greenish-grey in transmitted light. E.R.237J.
6. Rim fragment from No. 1. E.R.243D.
7. Rim fragment of cup, English porcelain, probably Caughley, underglaze blue ornament, internal ornament of a chequered band below the rim beneath which are pendant sprays and strands; floral pattern on the exterior of uncertain form. E.R.230, 254A. Some indication of the way in which the finds from the site were scattered is provided by the foregoing association, the

find spots being some thirty-six feet apart.

8. Saucer fragment, English porcelain, probably Worcester, a continuation of the blocked fence pattern to the right of a saucer comparable to No. 1. E.R.191.
9. Rim fragment of cup, English porcelain, probably Worcester, decorated in underglaze blue with pagoda on exterior and hatched band below the lip on the interior. E.R.191.
10. Spout fragment, probably from pitcher, English porcelain, perhaps Bow, decorated inside and out in underglaze blue and overglaze red and gold. While the exterior of the spout is decorated with a foliate scroll device, the interior bears a well executed flower. E.R.337D.
- 11-12. Fragments of an English porcelain tankard or mug, presumably Bow, decorated in underglaze blue with floral and fence-like motifs of good quality. E.R.192, 230C, 243M, 364A, 364B, 370C.



Figure 31

Figure 31

Base of brown stoneware storage jar with ante cocturam inscription reading "Evans [Anno] Domini 1740". There was a brown stoneware potter of this name working outside Bristol at that date. The vessel is of good quality, and the ware is characterized by a fine black fleck in the clay, and which appears in greater concentrations on the base, there having the appearance of graphite. E.R.192A, 194, 230C and 231D.



Figure 32

Figure 32

- 1 Jar, brown stoneware, possibly for preserves; "Fulham" style, the mottled upper body purplish-brown; the rim folded and undercut; the shoulder ornamented with incised grooves above and below. E.R.191, 192.
- 2 Handle and rim fragment of brown saltglazed tankard with a large quantity of vitrified salt and glaze caught in the junction of handle and body and overflowing above the rim. If found on a kiln site this would certainly be classified as a waster. Consequently it must be assumed that a market existed even for badly spoiled products. This example was almost certainly made at Yorktown. E.R.192.
- 3 Rim sherd of brown stoneware half-pint mug with impressed capacity stamp bearing the W R initials of William III. E.R.231B.
- 4 Rim and upper body fragments of "Nottingham" mug, brown stoneware decorated with a rusticated zone of flint chips, and below, the body ornamented with fluting. E.R.237H, 247C.
- 5 Bulbous-bodied pitcher (?), "Nottingham" stoneware, ornamented with band of cordon and grooves on shoulder. E.R.221, 222.
- 6 Mug or tankard, upper body fragment ornamented with rouletted band, grey core, glaze pale brown; probably Nottingham. E.R.247D.
- 7 Mug or jug fragment, ware and glaze similar to No. 6, the body thickened below a small shoulder and decorated with broad

cross-hatching. E.R.228.

- 8 Bowl, rim sherd, very thin and hard brown stoneware in "Nottingham" style, decorated with rouletted band below the rim, the glaze purplish-brown inside and out. E.R.230F.

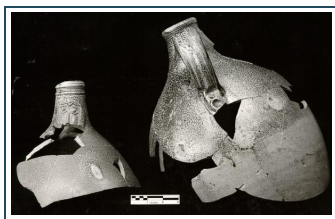


Figure 33

Figure 33

Left.	Rhenish stoneware "Bellarmine", upper body fragments only, grey bodied saltglaze stoneware, mottled brown on the exterior; well cordoned mouth and the mask of medium quality. c.1660. E.R.206, 230C, D and F, 231C and D, 243K, 247C.
Right.	Incomplete bottle, English brown stoneware (or possibly Yorktown), the body grey, red surfaced on the interior, the exterior saltglazed and slipped (purplish-brown) on the upper body, grey towards the missing base. The well-formed handle terminates in a thumb-impressed rattail. E.R.192, 198, 230F, 231B and C, 237A, 243H, J, K, L, R and S, 247C, D and G.



Figure 34

Figure 34

- 1 Jug, Westerwald grey stoneware, incised and stamped ornament decorated in cobalt; lower body fragments only, with traces of cordoning above base. E.R.229, 237H. Other sherds E.R.192, 195, 200, 228, 243K, M and R, 247D, one with half-gallon mark of capacity.
- 2 Medallion, sprigged, from Westerwald grey stoneware jug, possibly part of No. 1. Crowned G R medallion dated 1724 and bearing mold-maker's initials (?) ligatured HP and a W. One fragment found in 1949 excavations, the rest from E.R.191, 192, 233.
- 3 Jug, Westerwald grey stoneware, incised ornament highlighted in cobalt, the neck decorated with multiple grooves and coated with manganese. A sprigged G R medallion ornaments the front of the body; although the quality of the cast is poor, the mold was well made, the detail of the cherub beneath the cypher being particularly notable. Handle and base fragments were present, but are not illustrated. E.R.237J.
- 4 Jug, Westerwald grey stoneware, half-gallon capacity mark, decorated with double-lined scrolls and other devices as well as circular incised medallions containing stags (?), all highlighted or filled with cobalt. E.R.237J.
- 5 Jug, Westerwald grey stoneware, size similar to No. 3, decorated with incised leaf and stamped floral devices, highlighted in cobalt. E.R.230H, 235, 243K.
- 6 Storage jar, rim fragment, Westerwald grey stoneware, crudely incised ornament highlighted in cobalt. Such vessels normally have two horizontal handles close to the rim. E.R.243T, 264C.
- 7 Tankard, Westerwald grey stoneware, ornamented with stamped circles and chevrons highlighted in cobalt, and with sprigged G R medallion of small size; a broad zone below the rim heavily cordoned and decorated with two bands of blue. E.R.191, 192, 195, 198. Basal sherds not illustrated, E.R.243G, 247G.
- 8 Mug, Westerwald grey stoneware, probably half-pint capacity, adorned with cordons above the base and below the rim, the body zone ornamented with stamped rosettes and circles. E.R.221, 226; other sherds E.R.222, 248.
- 9 Bowl, Westerwald grey stoneware, roughly hemispherical form with two horizontal handles, diameter four and one-half inches. A band of cobalt ornaments the vertical collar rim, while the body is decorated with incised stylized foliate motifs extending downwards towards the flat base. E.R.243C and G. Other sherds E.R.209, 369G.

10 Bowl, Westerwald grey stoneware, similar form to the above, but diameter approximately seven and three-quarters inches, the body decorated with multiple rouletting, a band of cobalt-filled lozenges above the flat base and a zone adorned with incised inter-locking arcs below the rim: the latter of collar form decorated with a wide band of cobalt. E.R.228, 230, 231C and D, 243K and M, 247F. Other sherds E.R.191, 206, 230C, 243N and W, 247D, 369G.



Figure 35

Figure 35

Left.	Chamberpot, Westerwald grey stoneware, flattened and slightly down-sloping rim, ornamental grooves and single band of cobalt below rim and above base, the body decorated with stamped rosettes and sprigged, crowned lions, each device ringed with cobalt; handle reeded and folded at the base. Height, five inches. E.R.207.
Center.	Close-stool pan (?) with rolled rim and single horizontal handle, coarse red earthenware with lead glaze, the body slightly decorated with scored lines. Height, six and three-quarters inches. E.R.195, 206, 209, 214, 229, 243K and M, 247G.
Right.	Chamberpot, English white saltglaze, strapped handle and the rim everted and downbent. Height, five and one-quarter inches. E.R.237E.

Footnotes

1. As a rule of thumb English flints are generally grey and are rectangular in plan and possess a raised plateau in the center similar to the shape of the whole. French flints, on the other hand, are more wedge-shaped, being round at the back, and resembling horn or honey in color.

2. The four lead balls illustrated in this figure are all smaller than those used in the standard English musket. A Hessian mold found on a New York camp site produced bullets of the same size as No. 21. The Germans were equipped with rifles having a bore diameter of three-quarters of an inch. The British Ferguson rifle possessed a bore of eleven-sixteenths of an inch. However, American rifle bores were somewhat smaller. The average English Brown Bess musket had a bore of three-quarters of an inch, but the bullets seem to have had a diameter of only eleven-sixteenths of an inch. It is supposed, therefore, that this variation between ball and barrel diameters greatly reduced range. American musket balls, on the other hand, often had a diameter of only five-eighths of an inch and were wrapped in greased linen that provided a gas-tight fit and so increased range considerably. (*Claver & Bolton* , p. 78-81).

1. A letter from Mr. Elwood S. Wilkins, Jr., Delaware Archaeological Society, dated 11/8/61, gives analysis of a similar button (E.R.348) as follows: "Tin 100 parts, copper 30 parts and smaller amounts of several other metals. The sample taken for analysis was very small, too small in fact to be sure of the significance of some of the other metals found or to detect some that may be important to the proper identification of the coating. A larger sample could also change the tin-copper ratio in favor of a more accurate figure. It is of interest to note that Kerfoot, American Pewter, 1942 p. 11 states that 'Tin, with about 20% copper added, makes the finest of pewter'. and on page 17 he quotes Mr. H.L.J.L. Masee on the composition of fine early pewter as being tin 112 parts and copper 26 parts." Analysis performed by Mr. Samuel F. Ford, DuPont Company, Wilmington, Delaware.